

Aport-211S

Serial-to-Ethernet Gateway with eight digital I/Os

- ✓ Connect RS-232/422/485 devices to TCP/IP network
- ✓ Eight programmable digital I/Os
- ✓ 10/100Mbps Ethernet; 38,400bps serial data rate
- ✓ Supports TCP/Server mode and TCP/Client mode
- ✓ Web/Telnet/Serial consoles for device configuration
- ✓ Windows utility for device configuration and management
- ✓ Firmware upgradeable



Introduction

The Aport-211S is an easy-to-use Serial-to-Ethernet gateway which is designed for applications requiring quick, reliable and seamless integration of existing RS-232/422/485 devices to an Ethernet network.

Serial-to-Ethernet Data Conversion

The Aport-211S provides a transparent data channel between serial device and the TCP/IP network, so that the serial device can be accessed by using standard TCP/IP protocols.

Versatile Operation Modes

The Aport-211S can behave as a TCP server or a TCP client node on an Ethernet network to fulfill versatile application requirements.

Programmable Digital I/O

Besides, the Aport-211S also provides 6 TTL plus 2 CMOS digital I/Os. A pre-defined ASCII command set is provided for users to control these I/Os through LAN/WAN.



Specifications

Network Interface

- ▶ Type: 10/100BaseT, RJ-45 connector
- ▶ Protocols: TCP, UDP, HTTP, Telnet, IP, ICMP, ARP
- ▶ IP addressing: DHCP, Static IP

Operation Modes

- ▶ TCP/Server and TCP/Client

Serial Interface

- ▶ Type: RS-232/422/485, switch selectable
- ▶ Connector: DB9, male
- ▶ Signals: TxD, RxD, RTS, CTS, DTR, DSR, DCD, GND
- ▶ Baud: 1,200 to 38,400 bps
- ▶ Parity: None, Even, Odd
- ▶ Data bits: 7,8
- ▶ Stop bit: 1,2
- ▶ Flow control: None, RTS/CTS, XON/OFF

Programmable Digital I/Os

- ▶ PIO0~PIO5: TTL level compatible
- ▶ PIO6~PIO7: CMOS level compatible
- ▶ Connector: DB9, male

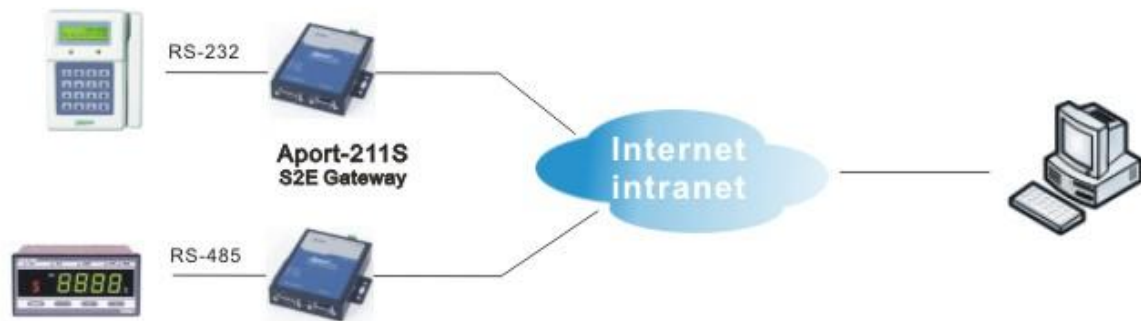
Configuration Methods

- ▶ Web console, Telnet Console and Serial Console
- ▶ Windows utility (included in CD)

General

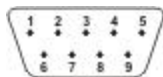
- ▶ Power input: 9~40VDC
- ▶ Power consumption: 70mA@+12VDC
- ▶ Operation temp.: 0~70C, 5~95% RH
- ▶ Storage temp.: -20~85C, 5~95% RH
- ▶ WxHxD: 78x108x25 mm
- ▶ Weight: 300g
- ▶ Regulation: CE/FCC compliant
- ▶ Warranty: 2 years

Serial Device Networking Architecture

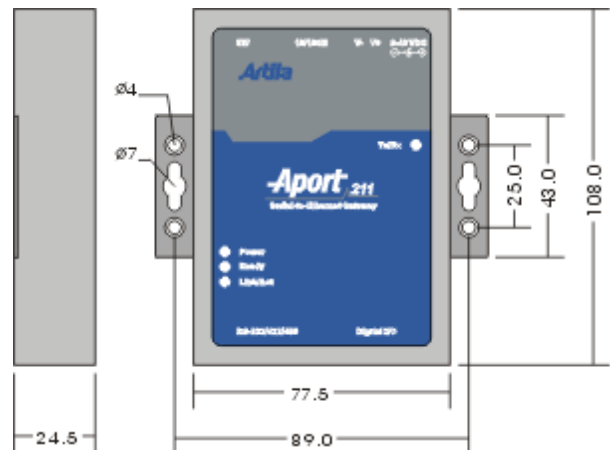


Pin Assignment

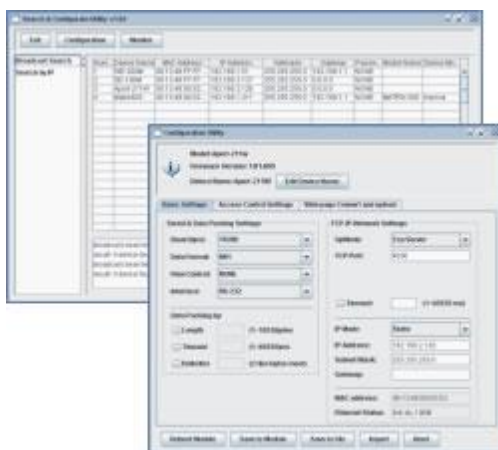
PIN	RS-232	RS-422	RS-485
1	DCD	Tx-	---
2	Rx	Tx+	---
3	Tx	Rx-	Data+
4	DTR	Rx+	Data-
5	GND	GND	GND
6	DSR	---	---
7	RTS	---	---
8	CTS	---	---
9	---	---	---



Dimensions



Utility Screenshots



Ordering Information

☒ Aport-211S

Serial-to-Ethernet Gateway with eight digital I/Os