

Aport-211W

Serial-to-Ethernet Gateway with User Web Space

- ✓ Connect RS-232/422/485 devices to TCP/IP network
- ✓ 64KB space for user web pages and Java applets
- ✓ Eight programmable digital I/Os
- ✓ 10/100Mbps Ethernet; 38,400bps serial data rate
- ✓ Supports TCP/Server mode and TCP/Client mode
- ✓ Web/Telnet/Serial consoles for device configuration
- ✓ Windows utility for device configuration and management
- ✓ Firmware upgradeable
- ✓ Wall and DIN-rail mountable



Introduction

The Aport-211W is a mini-mighty Serial-to-Ethernet gateway which is designed for applications requiring quick, reliable and seamless integration of existing RS-232/422/485 devices to an Ethernet network.

The Aport-211W can behave as a TCP server and a TCP client node on a Ethernet network to fulfill versatile application requirements.

64KB Space for User Web Pages

The Aport-211W features an extra 64KB Flash memory space to store user web pages. Taking advantage of Java applet, users can easily implement simple web-based device monitoring and control.

Users can compose web pages and develop Java applets with preferred tools, then use Artila Windows utility to transfer these files to the web server of the Aport-211W through LAN/WAN.

Programmable Digital I/O

Besides, the Aport-211W also provides 6 TTL plus 2 CMOS digital I/Os. A pre-defined ASCII command set is provided for users to control these I/Os through LAN/WAN.



Specifications

Network Interface

- ▶ Type: 10/100BaseT, RJ-45 connector
- ▶ Protocols: TCP, UDP, HTTP, Telnet, IP, ICMP, ARP
- ▶ IP addressing: DHCP, Static IP

Operation Modes

- ▶ TCP/Server and TCP/Client mode

User Web Server

- ▶ Space capacity: 64KB in Flash memory

Serial Interface

- ▶ Type: RS-232/422/485, switch selectable
- ▶ Connector: DB9, male
- ▶ Signals: TxD, RxD, RTS, CTS, DTR, DSR, DCD, GND
- ▶ Baud: 1,200 to 38,400 bps
- ▶ Parity: None, Even, Odd
- ▶ Data bits: 7,8
- ▶ Stop bit: 1,2
- ▶ Flow control: None, RTS/CTS, XON/OFF

Programmable Digital I/Os

- ▶ PIO0~PIO5: TTL level compatible
- ▶ PIO6~PIO7: CMOS level compatible
- ▶ Connector: DB9, male

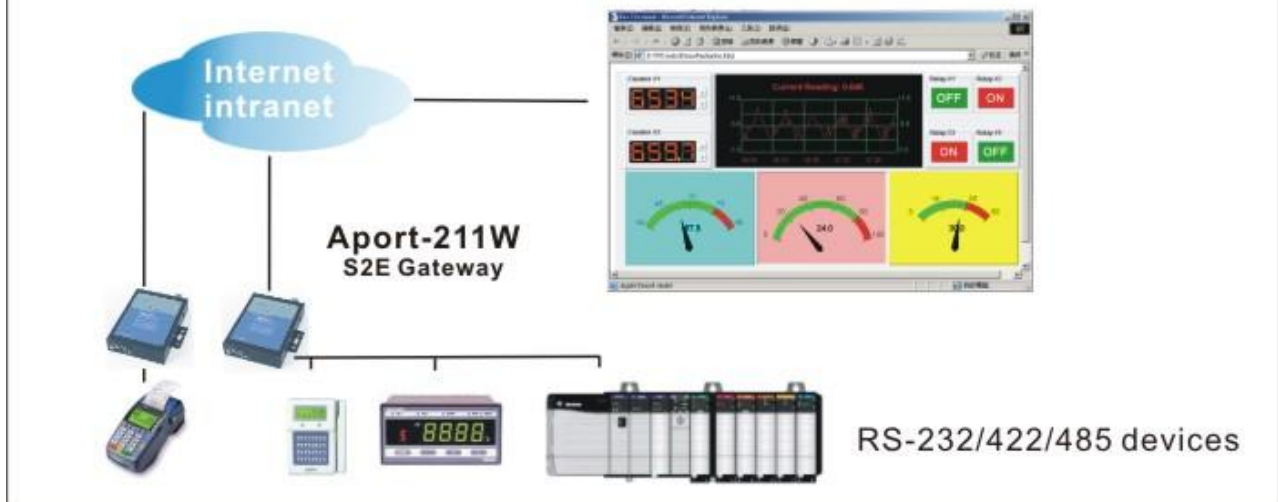
Configuration Methods

- ▶ Web console, Telnet Console and Serial Console
- ▶ Windows utility (included in CD)

General

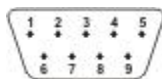
- ▶ Power input: 9~40VDC
- ▶ Power consumption: 70mA@+12VDC
- ▶ Operation temp.: 0~70C, 5~95% RH
- ▶ Storage temp.: -20~85C, 5~95% RH
- ▶ WxHxD: 78x108x25 mm
- ▶ Weight: 300g
- ▶ Regulation: CE/FCC compliant
- ▶ Warranty: 2 years

Browser-based device monitor/control



Pin Assignment

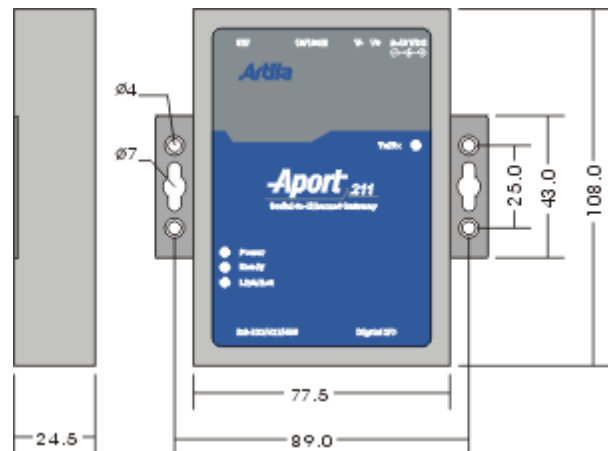
PIN	RS-232	RS-422	RS-485
1	DCD	Tx-	---
2	Rx	Tx+	---
3	Tx	Rx-	Data+
4	DTR	Rx+	Data-
5	GND	GND	GND
6	DSR	---	---
7	RTS	---	---
8	CTS	---	---
9	---	---	---



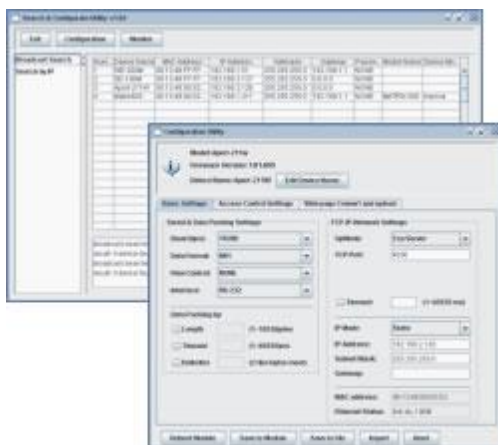
PIN	GPIO
1	PIO 0
2	PIO 1
3	PIO 2
4	PIO 3
5	PIO 4
6	PIO 5
7	PIO 6
8	PIO 7
9	GND



Dimensions



Utility Screenshots



Ordering Information

☑ Aport-211W

Serial-to-Ethernet Gateway with eight TTL digit I/Os and 64KB user web space