



Quick Start

Being familiar with your
ZigBee Converter in minutes!

Written by Tendo Tsai

Last Update by Tendo Tsai

Version 2.0, August/19 2008

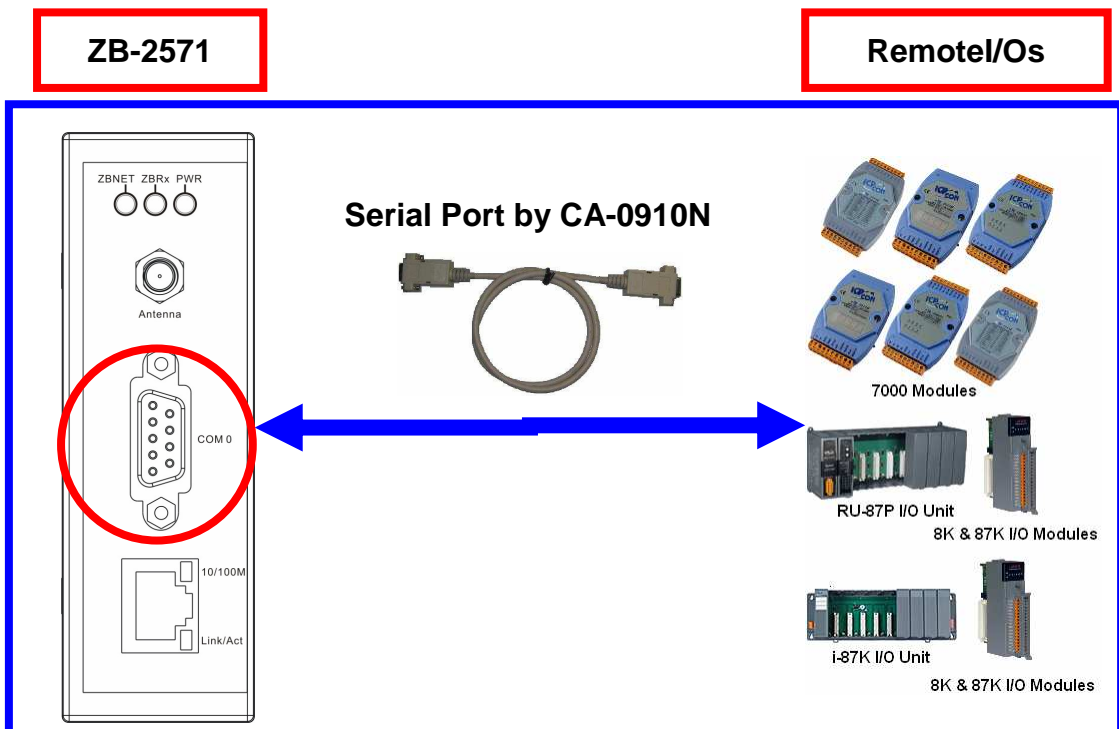
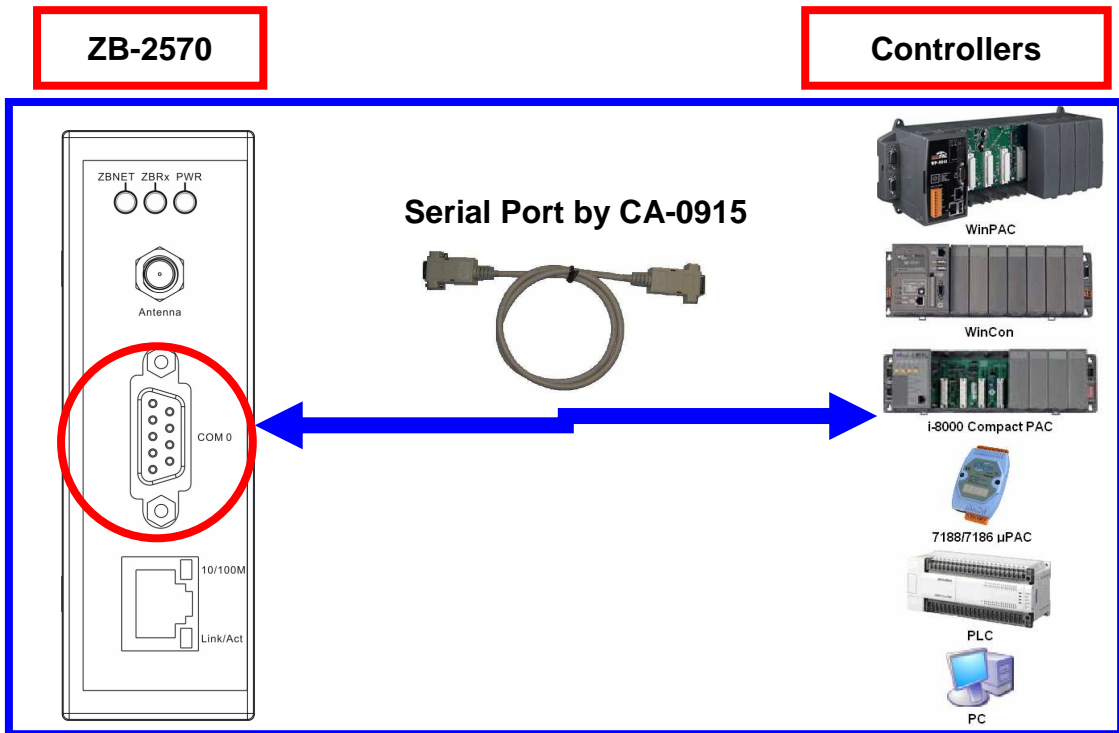
1. Installation of the Hardware

1.1 Connecting devices to ZB-257x by RS-232

1.2 Connecting devices to ZB-257x by RS-485

1.3 Connecting devices to ZB-257x by Ethernet

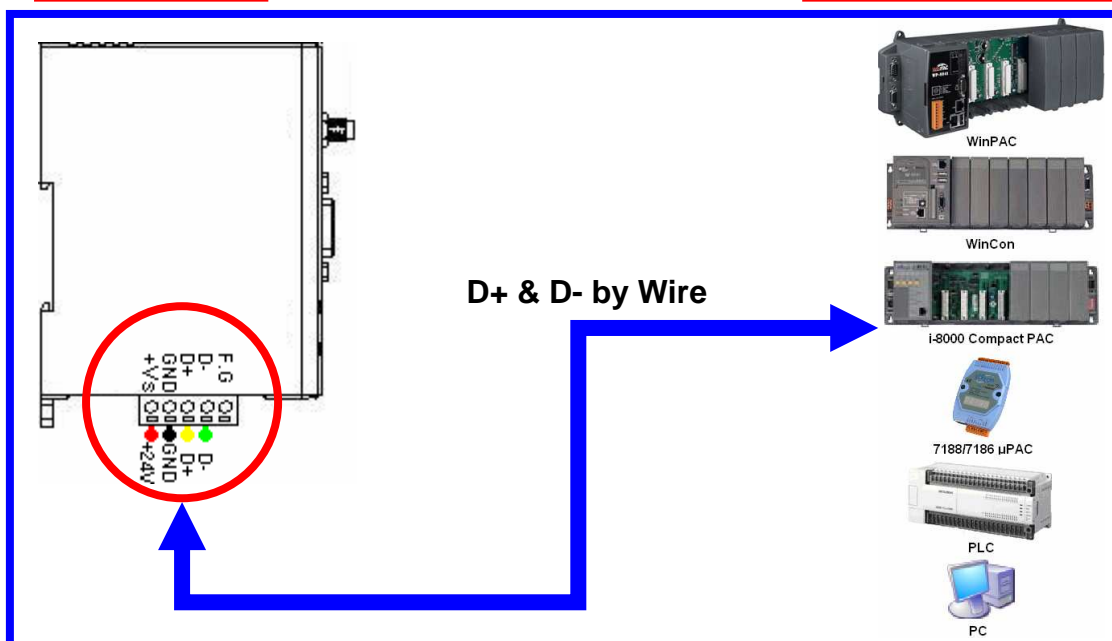
1.1. RS-232



1.2.RS-485

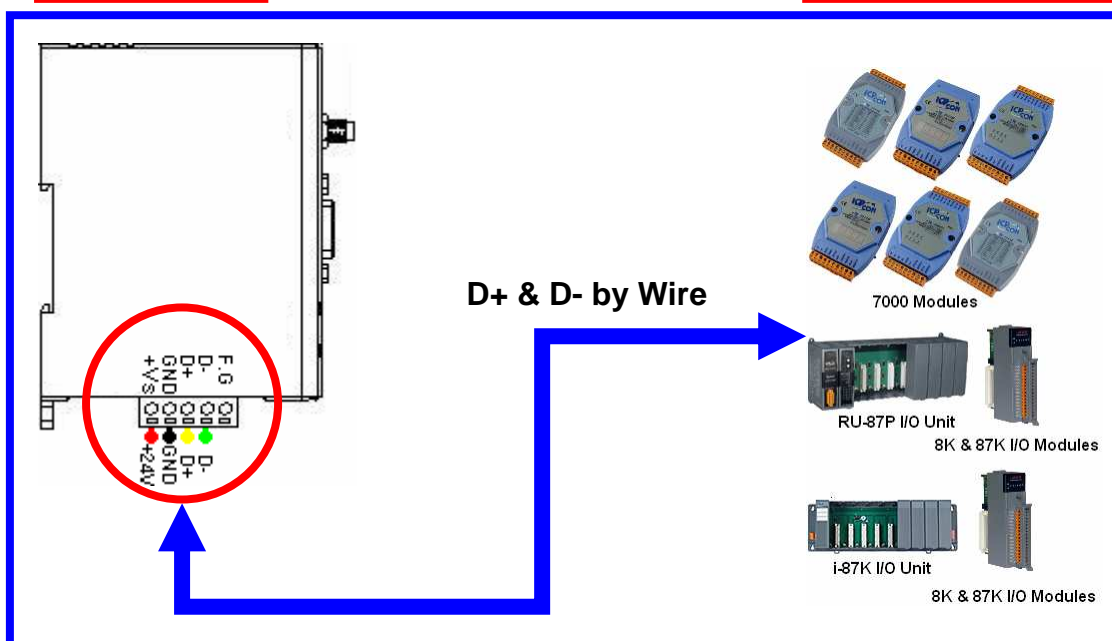
ZB-2570

Controllers

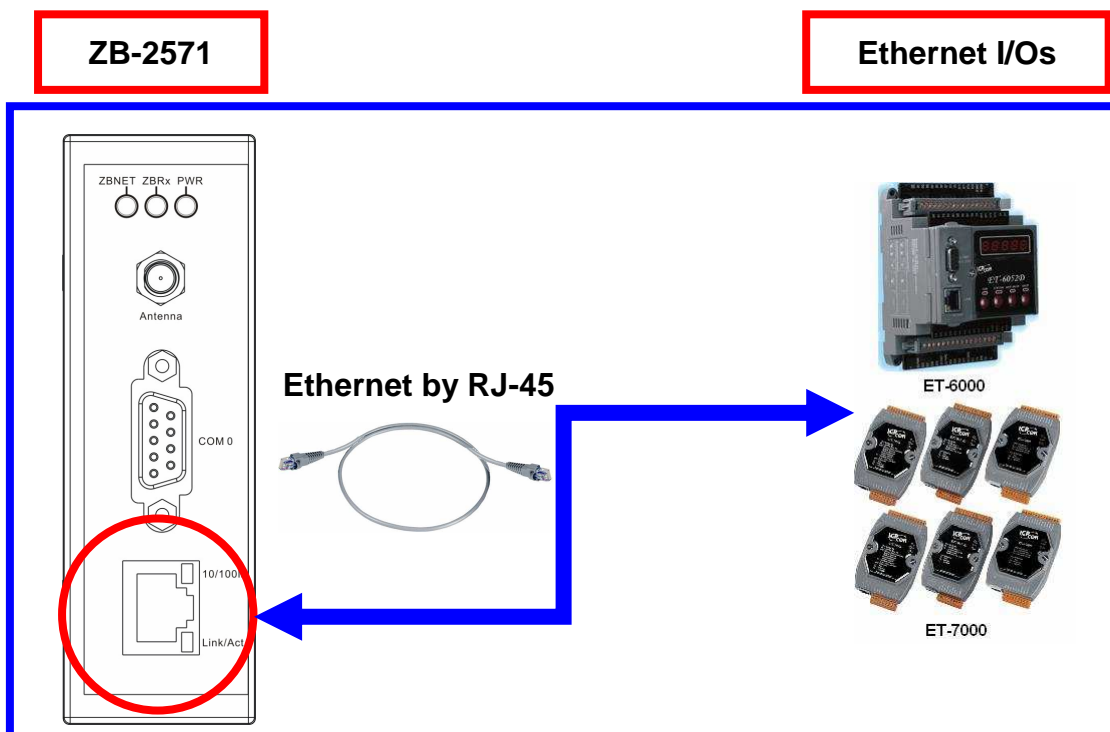
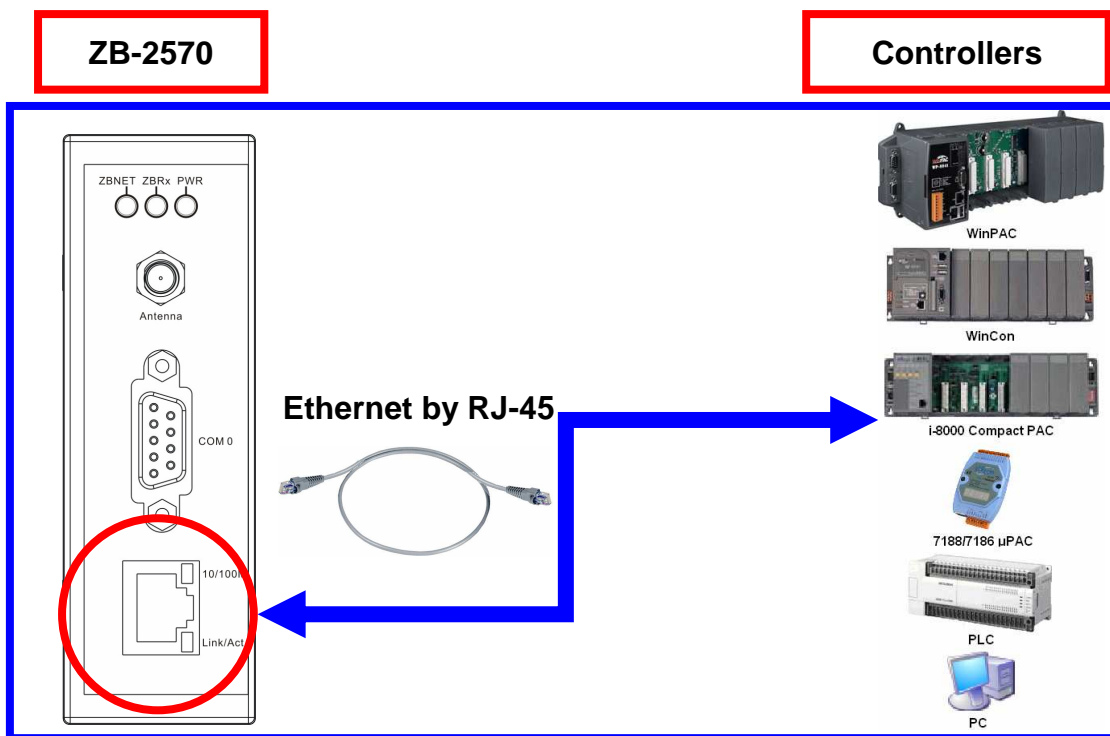


ZB-2571

Remote I/Os



1.3. Ethernet



2. Installation of the Configuration Tool

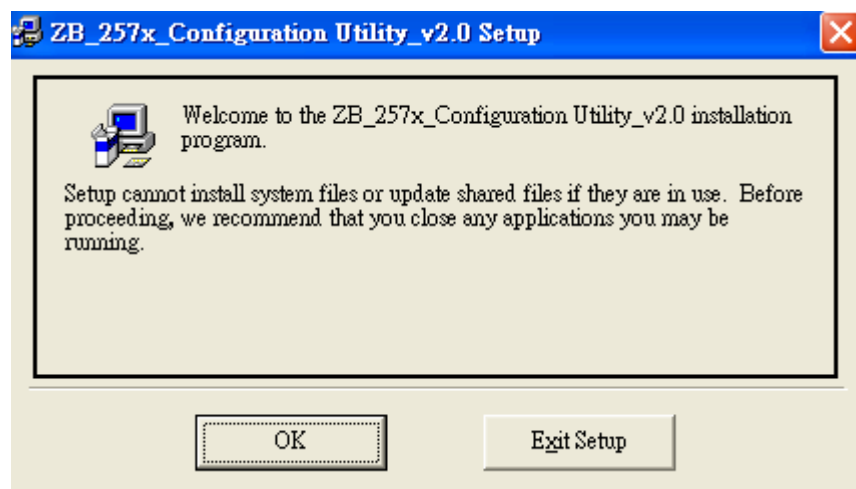
2.1. Please download the file from


<http://ftp.icpdas.com/pub/cd/usbcd/napdos/zigbee/utility/>

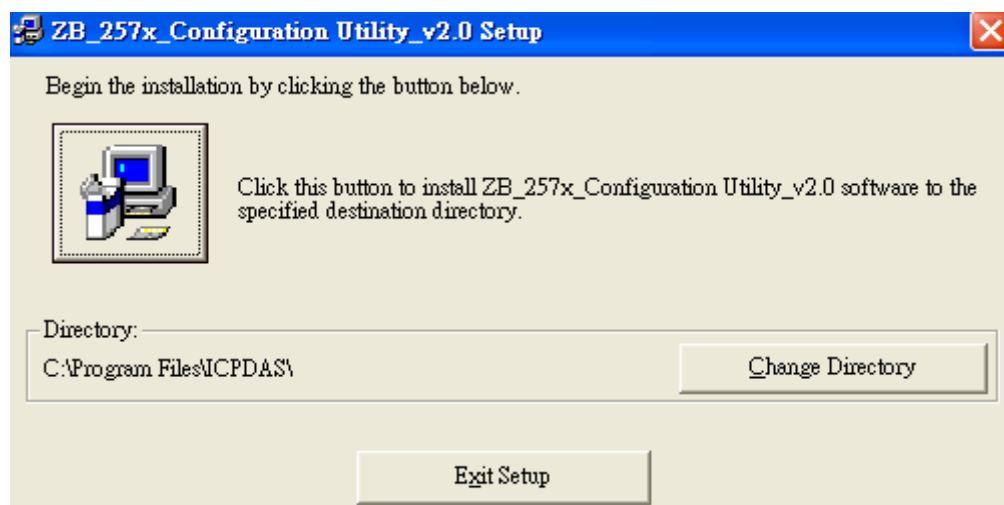
2.2. Uncompress the file in your PC and double-click the **setup.exe** to install the configuration tool for ZigBee converter.



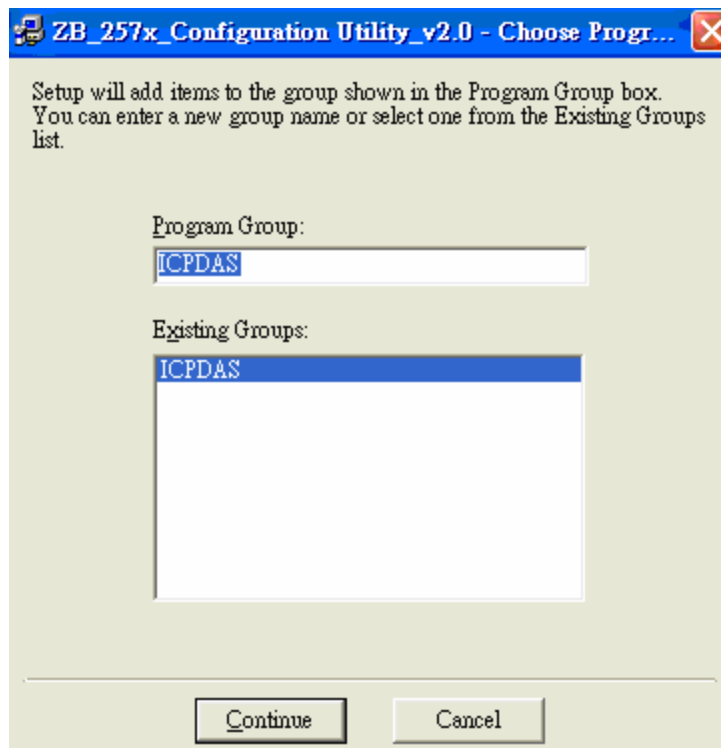
2.3. Click the **OK** button to start the installation when the following screen pops up.



2.4. When the following screen shows up afterwards, you can use our default directory or click **Change Directory** to change the installation directory in your PC. Click  to install the software or click **Exit Setup** to exit the installation.



2.5. Click **C**ontinue to complete the software installation or click **C**ancel to exit the installation.



2.6. Click **O**K. And the installation is successfully completed.



3. Quick Start for ZB_257x Configuration Utility v2.0

- 3.1.** When you configure the ZB-257x, you need to turn the switch to the **ZBSET**, and then make its power on (**Figure 1**). After configuration is done, you need to turn the switch to the **RUN**, and make the power on again (**Figure 2**).

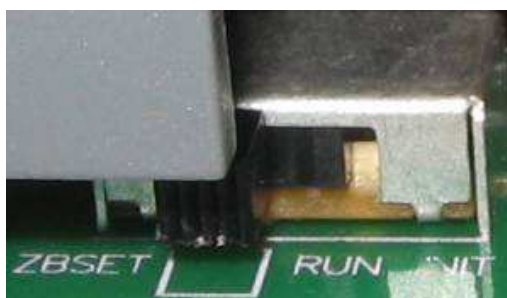


Figure 1

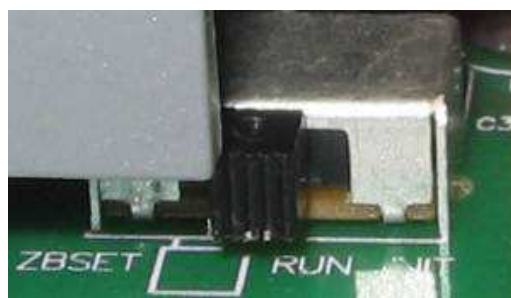


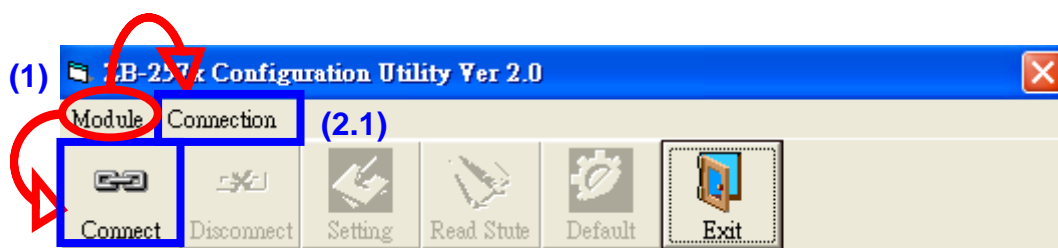
Figure 2

- 3.2.** After you install the utility, you can find the executable file at **Start\Application file\ICPDAS\ZB_257x Configuration Utility v2.0**



- 3.3.** Connect one of the communication interface (RS-232, RS-485 or Ethernet; the default configuration interface is RS-232) and execute the utility.

- 3.4.** When the following screen shows up:



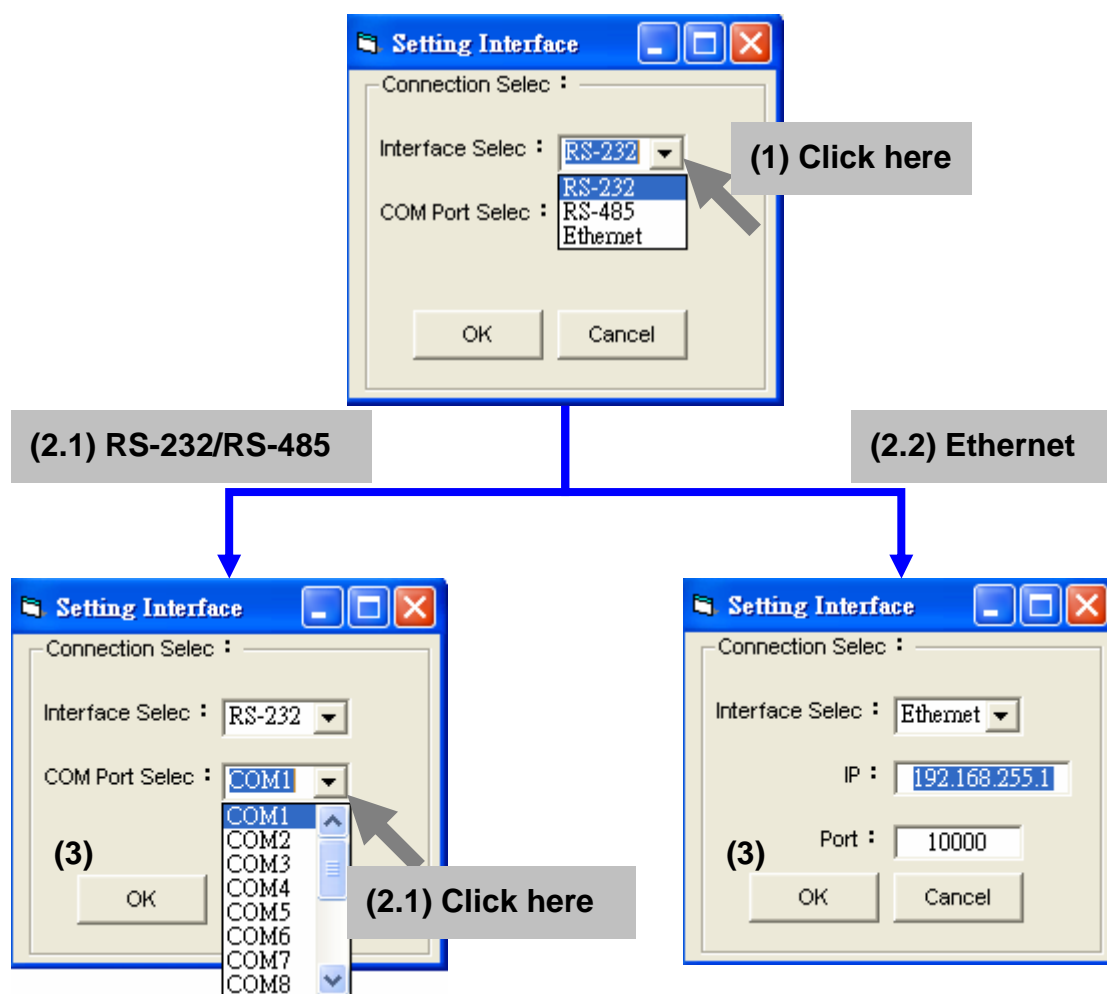
(2.2)

- (1) Click **Module** to select the module which you want to configure (ZB-2570 or ZB-2571).

- (2.1) Click **Connection** to configure the ZB-257x.

- (2.2) Or click **Connect** to configure the ZB-257x.

3.5. When the following screen shows up:



- (1) Click “(1) Click Here” to select the interface that brings the PC and the ZB-257x together.
- (2.1) If you use the serial port as the configuration interface, Click “(2.1) Click Here” to select the port number of PC that connects to the ZB-257x.
- (2.2) If you use Ethernet as the configuration interface, enter IP and port of the ZB-257x; the default IP is **192.168.255.1**, and the default port is **10000**.
- (3) Click **OK** to configure the ZB-257x or Click **Cancel** to cancel connection.

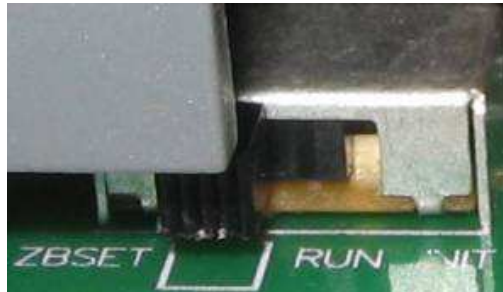
When the following screen displays, it means that connection succeeds, and click **OK** to continue the configuration.



4. Configure the Serial Port of the ZB-257x

4.1.ZB-257x Serial Port Hardware

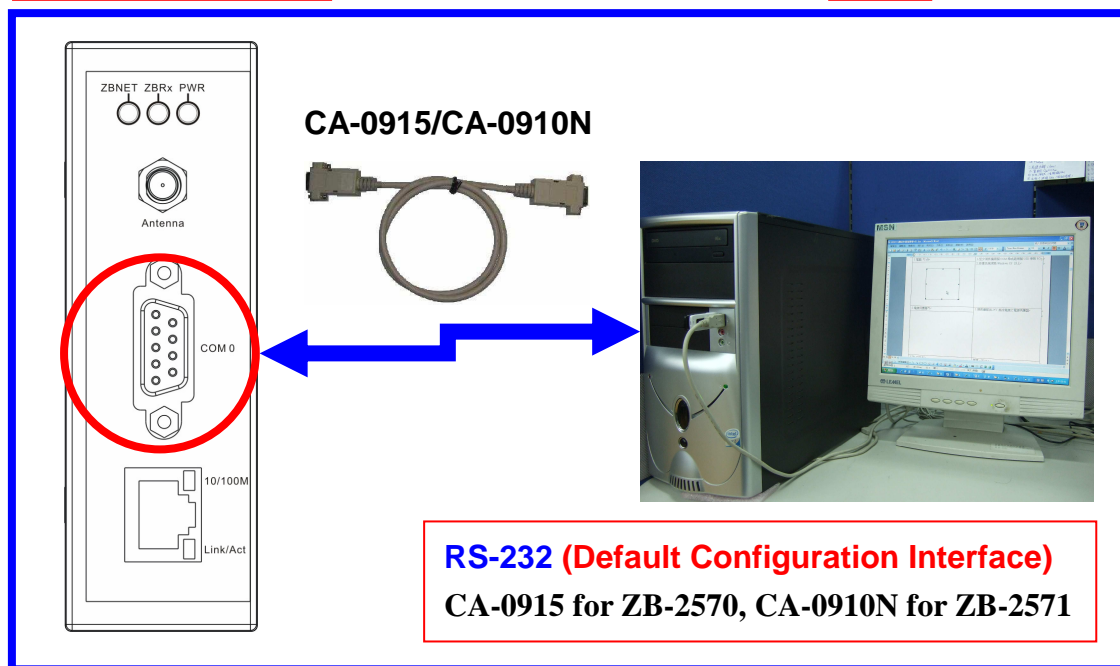
4.1.1. You need to turn the switch to the **ZBSET**, and then make its power on.



4.1.2. How to configure the Serial Port!

ZB-2570/ZB-2571

PC




4.2.ZB-257x Serial Port Mode

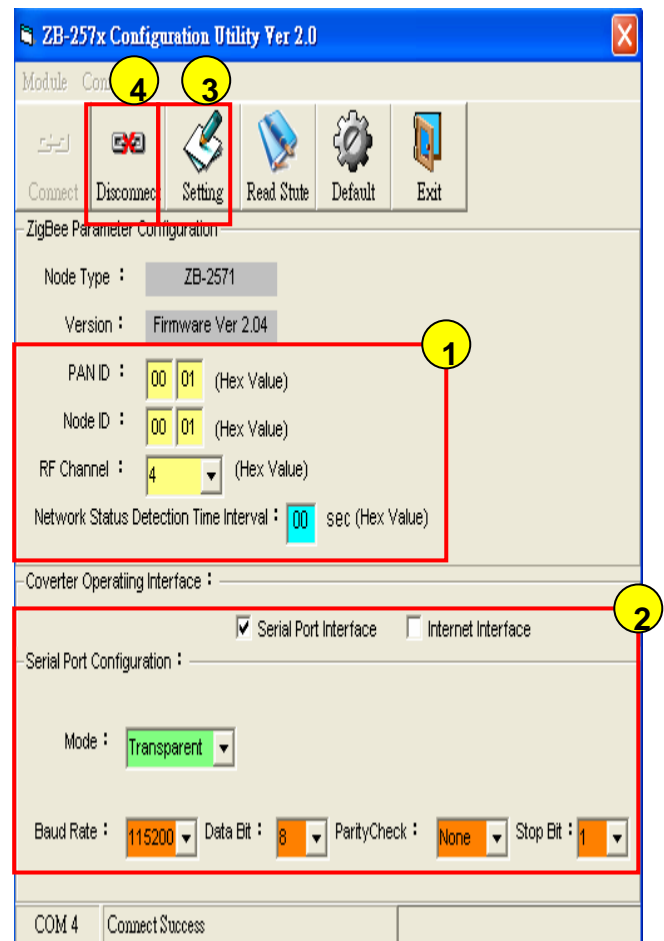
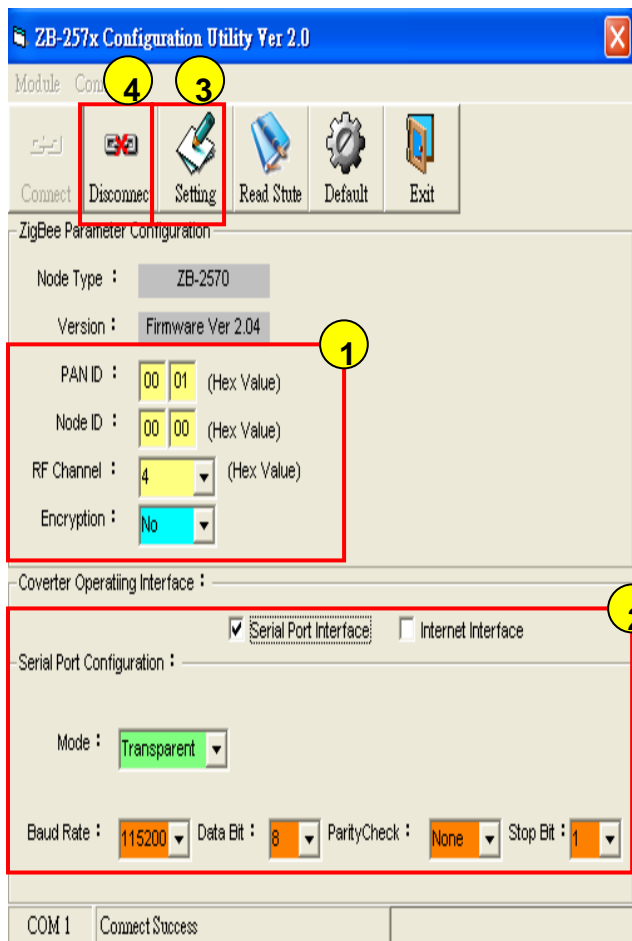
4.2.1.Mode1 – Transparent

(1) **PAN ID, Channel and Mode** must be the same as each other, ZB-2570's NodeID must be **00 00**, ZB-2571's NodeID is **00 01 ~ FF FF**.

(2) check **Serial Port Interface**, then **Mode** chooses **Transparent**.

(3) Click **Setting**.

(4) When the window pops up like the picture , click **Disconnect** button in the "Configuration Utility" window.




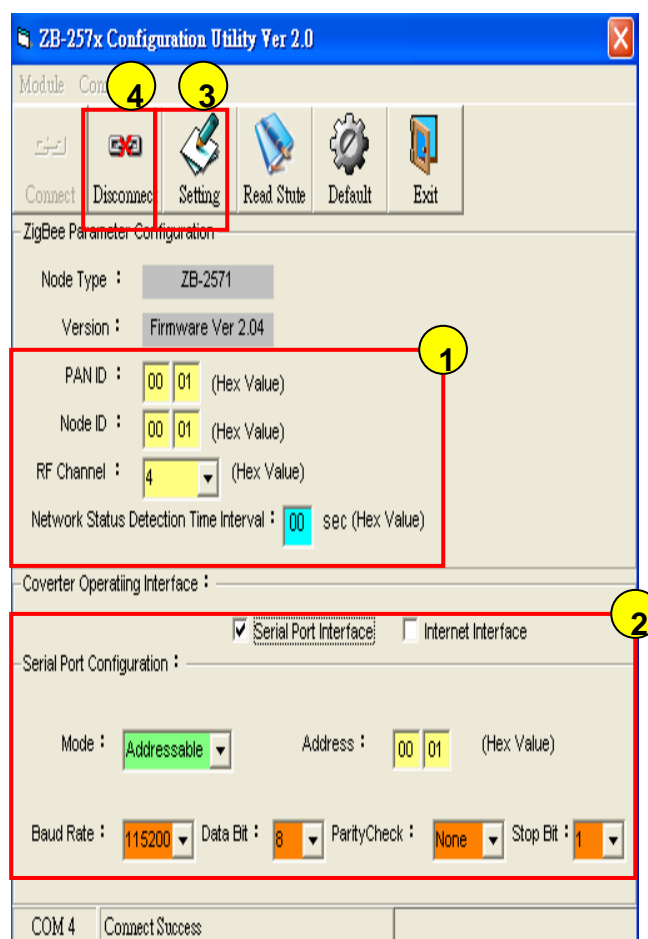
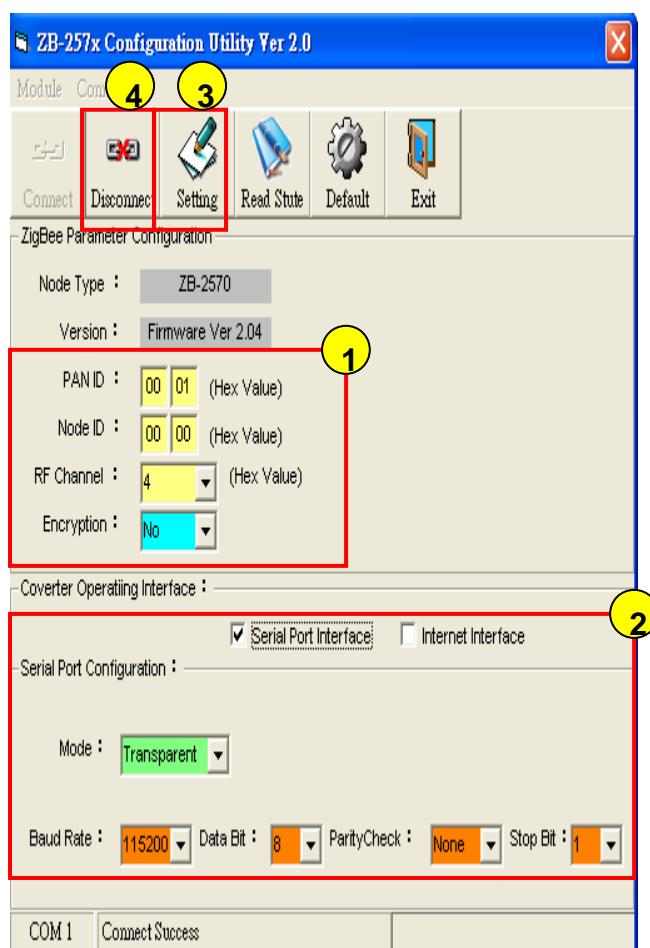
4.2.2.Mode2 – Addressable

(1) **PAN ID, Channel and Mode** must be the same as each other, ZB-2570's NodeID must be **00 00**, ZB-2571's NodeID is **00 01 ~ FF FF**.

(2) check **Serial Port Interface**, then **Mode** chooses **Addressable**.

(3) Click **Setting**.

(4) When the window pops up like the picture , click **Disconnect** button in the "Configuration Utility" window.




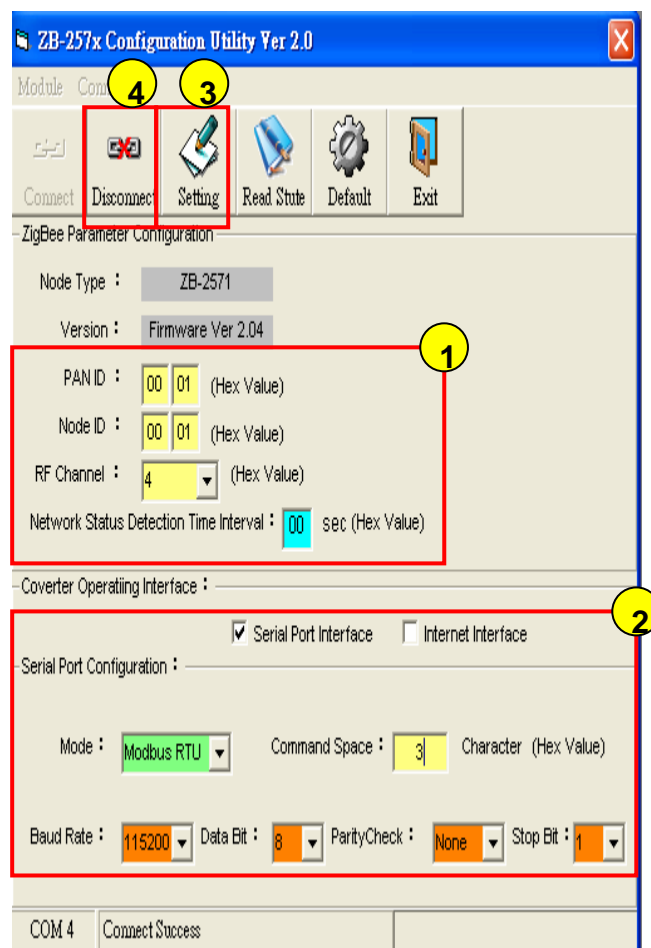
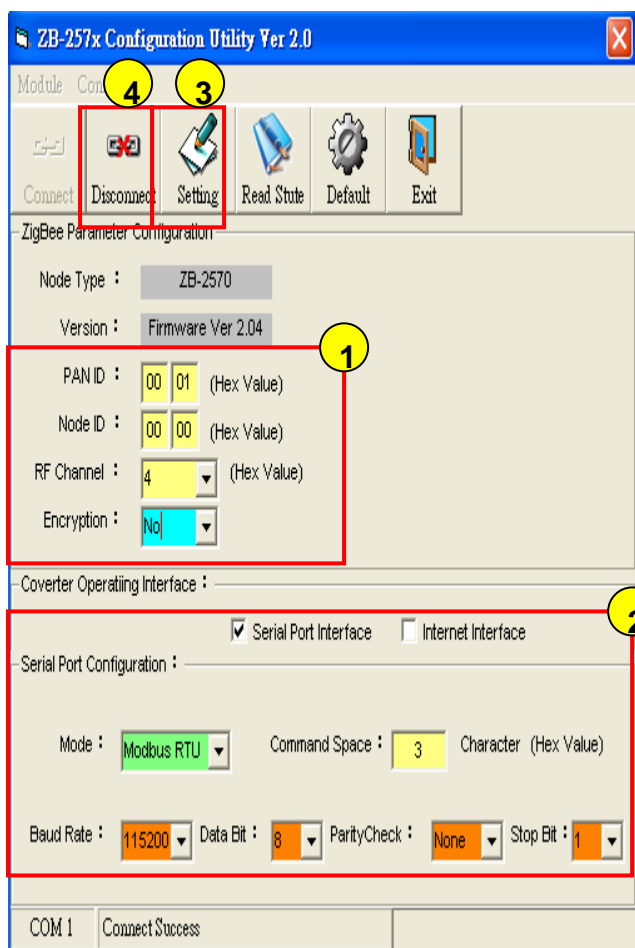
4.2.3.Mode3 – Modbus RTU

(1) **PAN ID**, **Channel** and **Mode** must be the same as each other,
ZB-2570's NodeID must be **00 00**, ZB-2571's NodeID is **00 01 ~ FF FF**.

(2) check **Serial Port Interface**, then **Mode** chooses **Modbus RTU**.

(3) Click **Setting**.

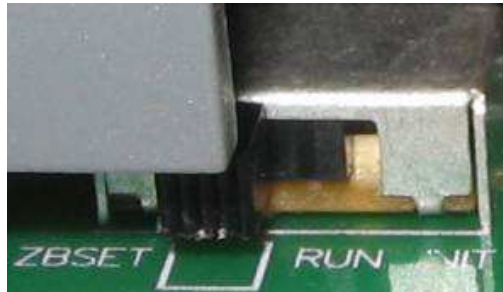
(4) When the window pops up like the picture , click **Disconnect** button in the "Configuration Utility" window.



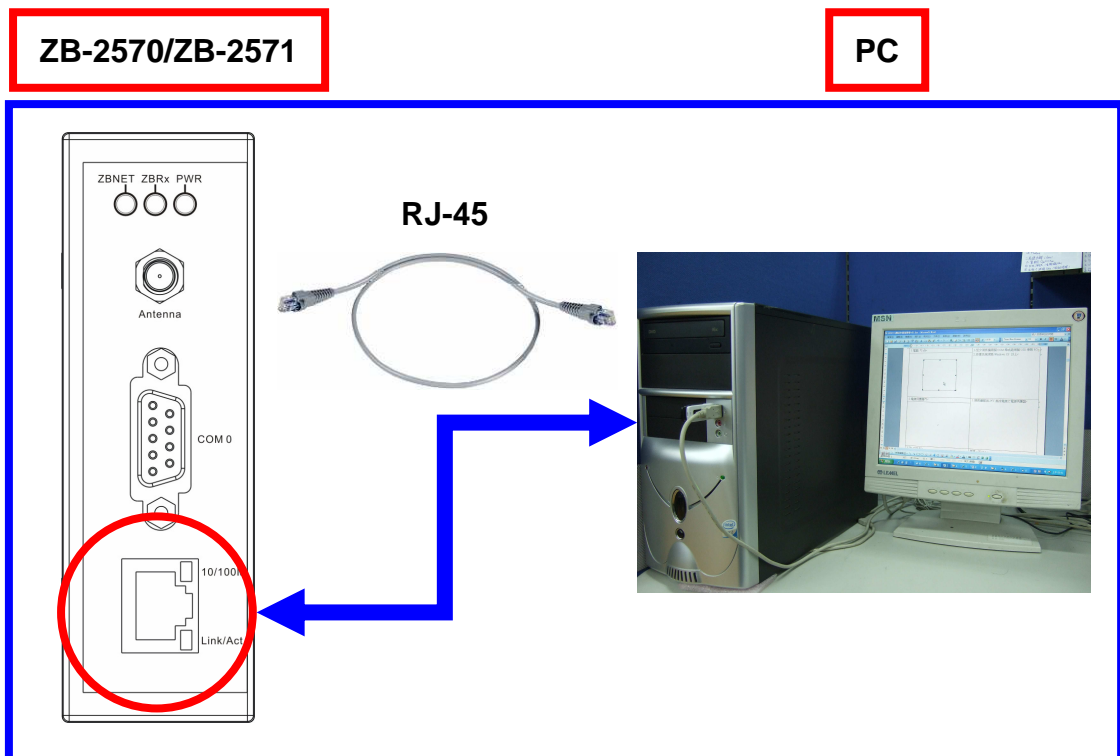
5. Configure the Ethernet Port of the ZB-257x

5.1.ZB-257x Ethernet Port

5.1.1. You need to turn the switch to the **ZBSET**, and then make its power on.



5.1.2. How to configure the Ethernet Port!




5.2.ZB-257x Ethernet Mode

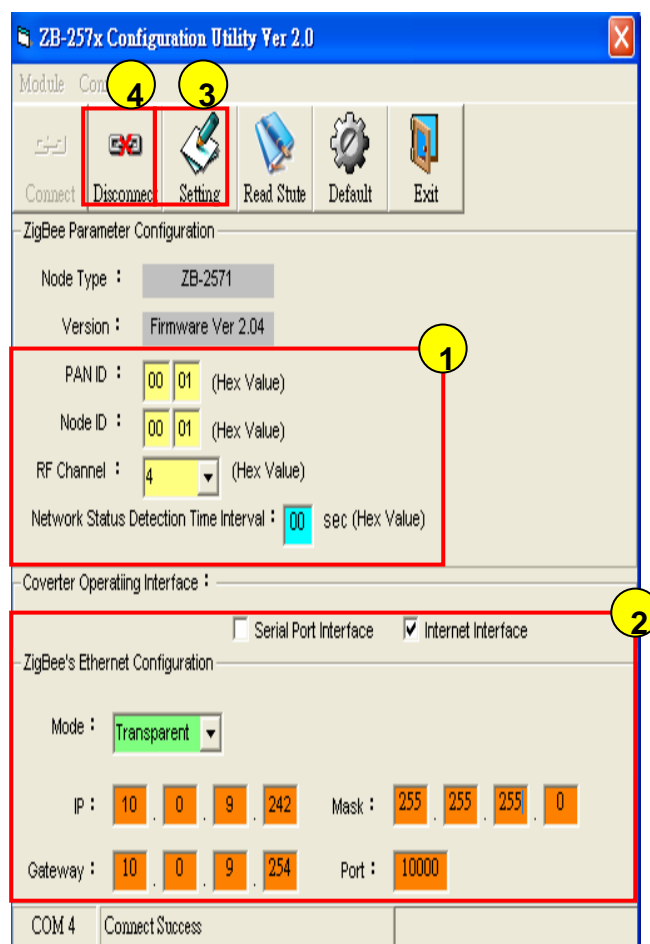
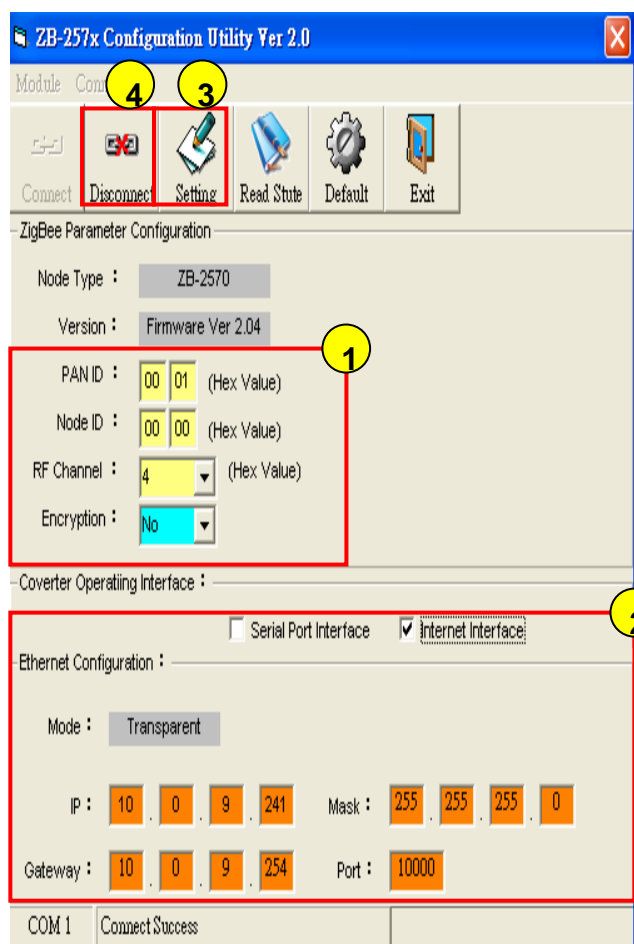
5.2.1.Mode1 – Transparent

(1) **PAN ID** and **Channel** must be the same as each other, ZB-2570's NodeID must be **00 00**, ZB-2571's NodeID is **00 01 ~ FF FF**.

(2) check **Ethernet Interface**, ZB-2571's **Mode** chooses **Transparent**; IP of the ZB-2571 must be not the same as the ZB-2570.

(3) Click **Setting**.

(4) When the window pops up like the picture , click **Disconnect** button in the "Configuration Utility" window.




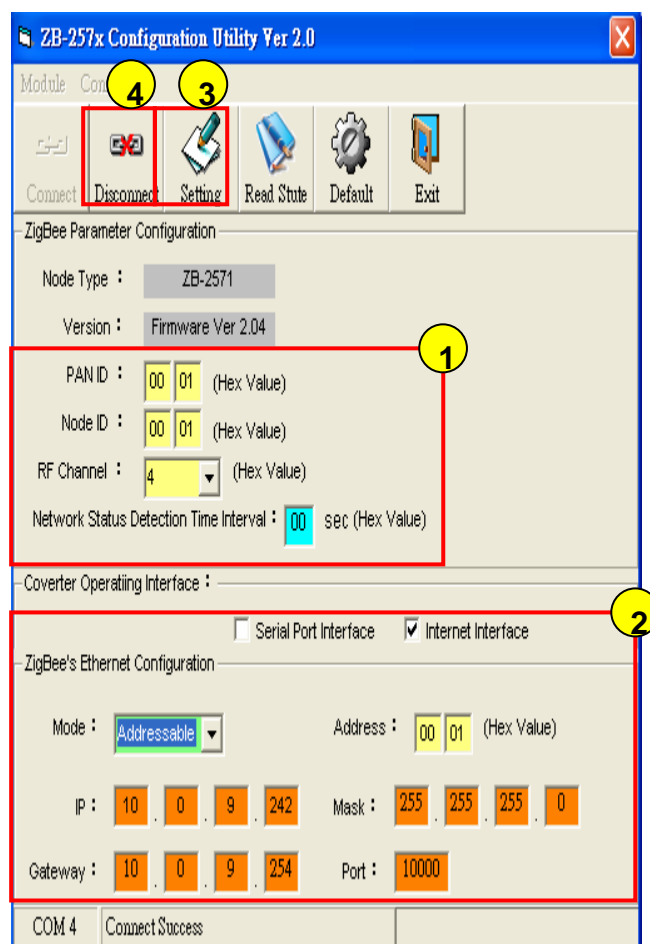
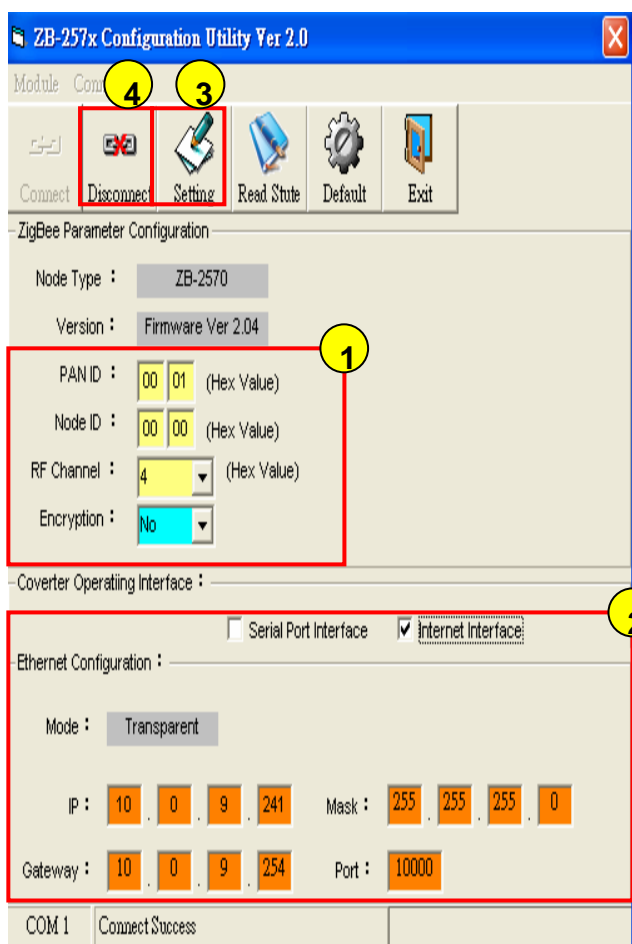
5.2.2.Mode2 – Addressable

(1) **PAN ID** and **Channel** must be the same as each other, ZB-2570's NodeID must be **00 00**, ZB-2571's NodeID is **00 01 ~ FF FF**.

(2) check **Ethernet Interface**, ZB-2571's **Mode** chooses **Addressable**; IP of the ZB-2571 must be not the same as the ZB-2570.

(3) Click **Setting**.

(4) When the window pops up like the picture , click **Disconnect** button in the "Configuration Utility" window.




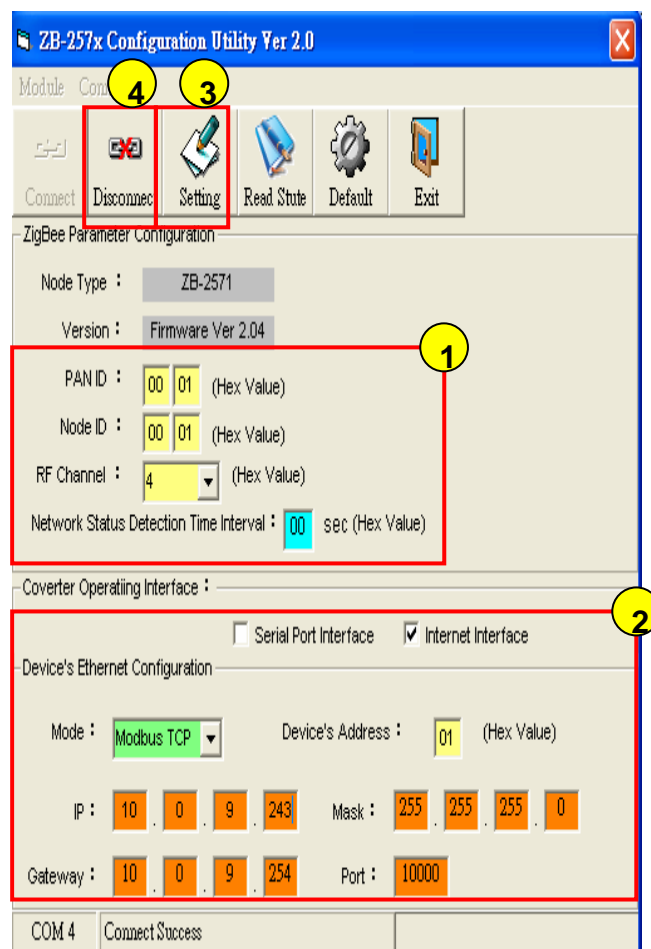
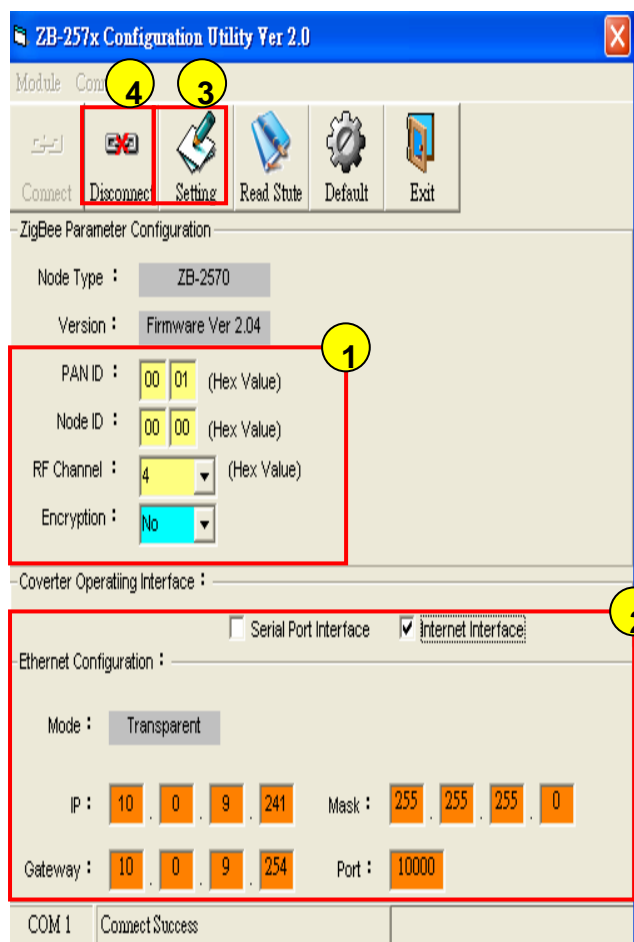
5.2.3.Mode3 – Modbus TCP

(1) **PAN ID** and **Channel** must be the same as each other, ZB-2570's NodeID must be **00 00**; ZB-2571's NodeID is **00 01 ~ FF FF**.

(2) check **Ethernet Interface**, ZB-2571's **Mode** chooses **Modbus TCP**; IP of the ZB-2571 must be not the same as the ZB-2570; **IP of the Device** must be not the same as the ZB-2571.

(3) Click **Setting**.

(4) When the window pops up like the picture , click **Disconnect** button in the "Configuration Utility" window.



6. Set To Default

Steps:

- (1) Click **Connect**
- (2) Click **Default**.
- (3) When the "Default Succeed" window pops up like the following picture, click **Disconnect** button in the "Configuration Utility" window.

