



Industrial 8-Port Unmanaged Fast Ethernet Switch

■ ■ EH2308

RoHS compliant

Technology

- 10/100BaseT(X) (RJ45)
- Broadcast storm protection
- Support IEEE 802.3/ 802.3u/ 802.3x
- 10/100M, Full/Half-Duplex, MDI/MDI-X auto-detection

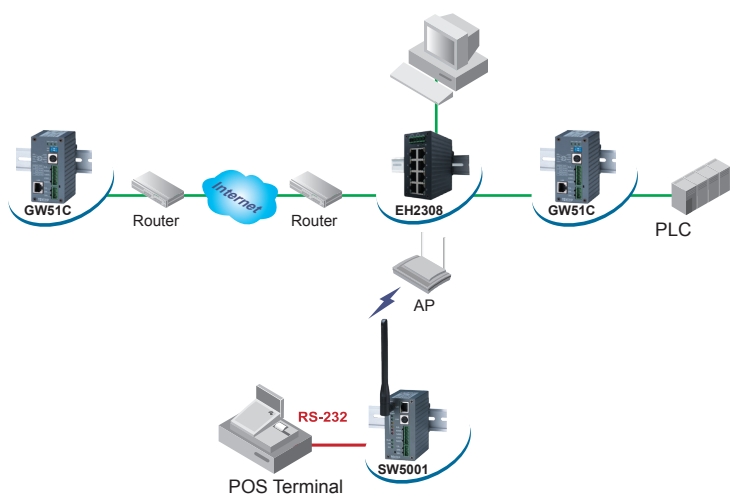
Reliability

- Redundant dual DC power inputs
- Operating temperature ranges from -10~70°C
- Rugged high-strength housing
- DIN-Rail or wall mounting ability

EH2308 with 8 RJ-45 ports for your industrial applications. It designs to work in the industrial environment, such as in hazardous locations that comply with CE, FCC, UL, and RoHS standards.

EH2308 protects itself from receiving too many broadcast packets. During normal use, broadcast packets will be forwarded to all ports except the source port. However, it will discard broadcast or multicast packets if the number of those packets exceeds a threshold in a preset period of time. When the preset period expires (about 800ms), it will then resume receiving broadcast or multicast packets until the threshold is reached again.

EH2308 provides two redundant power inputs that can be connected simultaneously to wide-range DC power sources. If one of the power inputs failure, the other live source acts as a backup to provide the EH2308 power needs automatically.



Industrial 8-Port Unmanaged Fast Ethernet Switch



Specifications

Ethernet

| | |
|-------------------|------------|
| Transmission rate | 10/100Mbps |
| Ports | 8 |
| 10/100Mbps | 8 |
| Connector | RJ-45 x 8 |
| Auto MDI/MDI-X | Yes |

Power

| | |
|-------------|-----------------------------------|
| Input | DC 9~48V |
| Connector | 5-pin 5.08mm pitch Terminal block |
| Consumption | 4 Watts Max |

Environment

| | |
|-----------|---|
| Operating | -10°C ~ 70°C (14°F ~ 158°F) |
| Storage | -40°C ~ 85°C (-40°F ~ 185°F), 5%~95% RH |

Notes:

For UL policy the maximum operating temperature is 50°C,
and the human body can tolerate maximum temperature is 70°C.

Dimension

| | |
|-----------|----------------------|
| W x H x D | 45.2mm x 90mm x 78mm |
|-----------|----------------------|

Approval

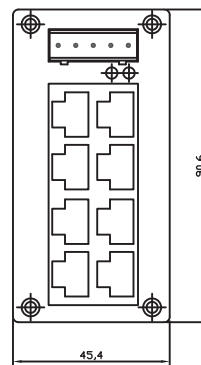
UL(Safety): UL60950-1, CSA C22.2 No.60950-1-03
FCC(EMI): FCC 47 CFR Part15, Subpart B, Class A
ICES-003, Class A
ANSI C63.4-2003
CE(EMI): EN 55022:1988+A1:2000+A2:2003, Class A
EN 61000-3-2:2000, Class A
EN 61000-3-3: 1995+A1:2001
CE(EMS): EN 55024:1998+A1:2001+A2:2003
IEC 61000-4-2:2001
IEC 61000-4-3:2002+A1:2002
IEC 61000-4-4:2004
IEC 61000-4-5:2001
IEC 61000-4-6:2003+A1:2004
IEC 61000-4-8:2001
IEC 61000-4-11:2004
Shock: IEC 60068-2-27
Free Fall: IEC 60068-2-32
Vibration: IEC 60068-2-6
RoHS: Lead(Pb) Free
MTBF: 568862 hrs(25°C) / 64.94 years(25°C)
Warranty: 5 years

Optional Accessories

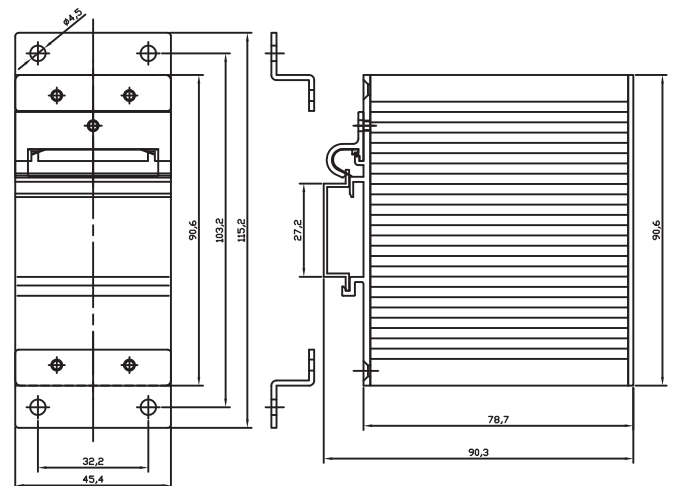
| | |
|---------------|--|
| Power adapter | US315-12(US/EU): AC100~240V/DC12V 5.08mm pitch Terminal block |
|---------------|--|

Ordering information

| | |
|-----------------|---|
| 1P1EH230800001G | Industrial 8-port Unmanaged Fast Ethernet Switch with |
| EH2308 | 8x 10/100TX |



Front-panel front view



Backboard rear view

(Mount kit)

Housing side view

Atop Technologies, Inc.

TEL : +886-3-5508137
FAX : +886-3-5508131
sales@atop.com.tw
http : //www.atop.com.tw

Design and specification are subject to change without notice.

All product names referenced herein are registered trademarks of their respective companies.

