

4.2. Intelligent GPRS/GSM Modules



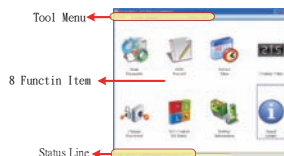
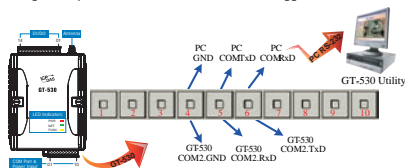
Features

- Support 900/1800/1900 MHz Tri-band frequency
- Identify ASCII or Unicode SMS Automatically
- Support max. 140 ASCII Characters
- Support max. 70 Unicode Characters
- Built-in ASCII Commands and SMS tunnel Communication Modes
- Max. 10 Default Phone Numbers
- Industrial Design with Surge Protection
- Support SMS setting and control
- 10 DI (6 Counter), 2 DO, 2 RS-232 port
- Digital input support NC/NO/Counter modes
- Send alarm SMS by DI trigger or exceed Counter preset limits
- Support simple command to send SMS via RS-232
- Support DC +10 V_{oc} ~ +30 V_{oc} Power Input
- Support 3.7 V Li-Ion Battery Backup



Introduction

GT-530 is an Intelligent SMS controller for industry applications with the simple commands and SMS tunnel function, and power can be input by external power or Li-Ion Battery. It supports UNICODE or 7 bit format for users to send SMS messages with in various languages. Applying GT-530, the SMS report can be sent by defined time or DI/counter event trigger. This can be a remote control and alarm system allowing you to use your mobile phone to monitor and control your business from any location. Its alarm facilities provide a flexible way to distribute critical alarm information to any number of mobile phone users. GT-530 can monitor up to 10 digital inputs (6 counters). The user can also interrogate the status of I/O through SMS messages. The GT-530 also has 2 Digital output which can be activated via DI trigger or SMS to control the lamps, pumps, heaters etc.



I/O Specifications

Digital Input	
Input Channel	10 (6 DI can be set as counter + 4 DI work with Li-Ion battery)
On Voltage Level	+3.5 V _{oc} ~ +30 V _{oc}
Off Voltage Level	+1V max.
Digital Output	
Output Channel	2
Output Type	Open Collector Output
Load Voltage	+24 V _{oc} max.
Load Current	500 mA max.

LED Indicators

Digital Input				
EXT (red)	on	The external Power is active		
	off	The external Power is not active		
STA (orange)	EXT on	Normal blinking (1 sec)	GSM Fail Always on or off	PIN code is wrong Blinking per 50 ms
	EXT off	Off (sleep mode) blinking (1 sec)(wake up)	Always on	blinking per 50 ms
GSM (green)	Blinking 3 sec	Modem normal		
	on	Modem fail (or Blinking(not 3 sec))		

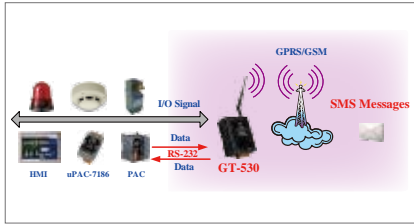
System Specifications

GSM/GPRS System	
GPRS/GSM Tri-band	900/1800/1900 MHz
GPRS Multi-slot	Class 10/8
GPRS Mobile Station	Class B
GPRS Class 10	Max. download speed 85.6 kbps
CSD	Up to 14.4 kbps
Compliant with GSM Phase 2/2+	Class 4 (2 W @ 900 MHz) Class 1 (1 W @ 1800/1900 MHz)
Coding Schemes	CS 1, CS 2, CS 3, CS 4
SMS	Text and PDU Mode
Serial Ports	
COM2	RS-232: Tx/D, Rx/D, GND
COM3	RS-232: Tx/D, Rx/D, GND
Power	
Protection	Reverse polarity protection
Frame Ground Protection	ESD, Surge, EFT, HI-Pot
Required Supply Voltage	+10 V _{oc} ~ +30 V _{oc} with 600 mAh Li-Ion battery backup (Option : 1200 mAh)
Mechanical	
Casing	Plastic
Flammability	UL 94V-0 material
Dimensions (W x H x D)	91 mm x 132 mm x 52 mm
Installation	DIN-Rail
Environment	
Operating Temperature	-25 °C ~ +55 °C
Storage Temperature	-40 °C ~ +80 °C
Humidity	5 ~ 95% RH, non-condensing

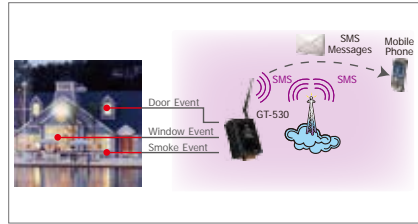
Applications

Machine, Standby Power Generator, Electrical Panels, Pumps, Vending Machines, Fire alarm Panels, Gas monitoring System, HVAC system, Door security, etc.

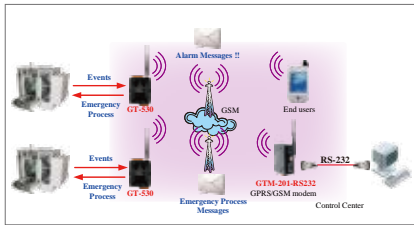
Signal Alarm and SMS communication



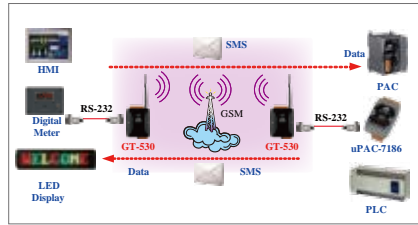
Home security



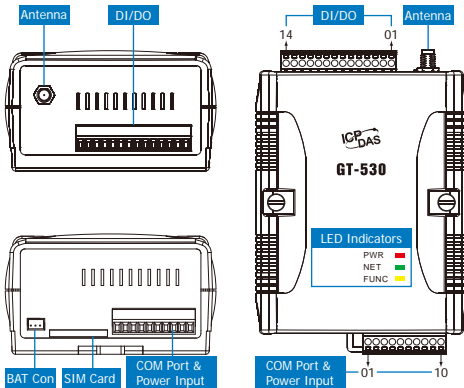
Remote maintenance



SMS Tunnel Communication

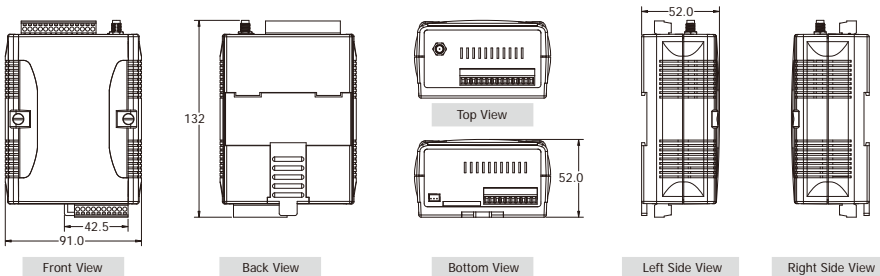


Appearance



DI/DO		COM Port & Power Input			
Terminal No.	Pin Assignment	Terminal No.	Pin Assignment		
DI	01	D10	01	GND	
	02	D11	02	RxD1	
	03	D12	03	TxD1	
	04	D13	04	GND	
	05	D14	05	RxD2	
	06	D15	06	TxD2	
	07	D16	N/A	N/A	
	08	D17	Power Input:		
	09	D18	+10 V _{DC} ~ +30 V _{DC}	08	DC +Vs
	DO	10	D19	09	DC.GND
		11	DO0	10	F.G.
		12	DO1		
		13	DO.PWR		
	DI/DO	14	Ext.GND		

Dimensions (Unit: mm)



Ordering Information

GT-530 CR	Intelligent SMS Alarm Controller (RoHS)
-----------	---

Accessories

3S003	External GPRS/GSM Antenna
-------	---------------------------