

NEWAY™
mobile audio-visual solution in vehicle



Update informaion in the website
[Http://www.NewayE.com](http://www.NewayE.com)

DEAR CUSTOMERS

Thank you for purchasing the liquid crystal display monitor. This product employs new integrate circuits and high quality TFT LCD modules. It is putting out with its low power consumption, emits no radiation, and other advantage characteristics. This product is shaped with modern style and is easy to be carried with. The color TFTLCD is the most suitable display for VGA, VCD, DVD and GPS system for motorcars and ships .It also can be used in the office, in flat, at home also in other suitable position. You will certainly benefit from this monitor in lots of ways, to name some of them: convenience, safety, and space saving. Operation manual

We hope that you will have the enjoyment of your new mini color TFT LCD.

To ensure the best use of the unit, please read this handbook carefully beforehand.

CAUTION

1. Please use the adapter attached in the accessory.
2. Do not expose this product to direct sunlight, heat or humid conditions.
3. Keep away from strong light while using this product so as to obtain the clearest and the most colorful picture.
4. Please avoid heavy impact or drop onto the ground.
5. Do not use chemical solutions to clean this unit. Please simply wipe with a clean soft cloth to keep the brightness of the surface.
6. If the product does not operate normally when the instructions are followed. Adjust only those controls that are covered by the instructions. Improper adjustment of other controls may result in damage and will often require extensive work of a qualified technician.

Safety defended:

Properly maintain your system to guarantee its service life and reduce the damage risk.

- It should avoid the humidity and extreme temperature when using.
- Avoid being revealed making equipment for a long time under shoot straight at sunlight or intense ultraviolet ray lamp light.
- Avoid heavy impact or drop onto the ground.
- The LCD screen is very easy to shave a wound, avoid crashing please. Be sure not to use other sharp article to bump against touch screen.
- The fuselage is external, close a power source, allocate away mains lead if should be clean, quality cloth cleans with tiny wet soft when clean screen, in order to not lose trifling soft of cotton please.
- Strictly forbid the machine presumptuously dismantling or keeping the machine, otherwise, possibility damage in repair.
- Do not place with your equipment or accessory and other inflammable liquid, the gas or other explosive articles place together, to avoid happening dangerous.

Catalogue

- System diagram 1
- Product description 2
- Description of each part 3
- Memory card description 4
- Touch screen calibration 5
- Synchro software installation and usage 7
- Car rear view 8
- Trouble shooting 10

System diagram

Please check whether the accessories are full before using the instrument.



Product description

Function

- ◆ 7" 16:9, 800 * 480 high resolution;
- ◆ Win CE operating platform;
- ◆ Touch screen control;
- ◆ Support MP3, MP4 and photograph playing;
- ◆ SD card stores, the data reliable, convenient and easy for expansion;
- ◆ AV input;

Parameter

Configuration	Parameter
System configuration	Optional: CPU S3C2440AL, 400MHz Flash 64M SDRAM 128M
Media player	Audio: MP3, WMA, WAV Video: MPEG1/2/4, ASF, WMV9, Picture: JPG, BMP
AV	AV input
Interface	SD card USB Device, USB host Earphone output port Video input port DC power input RS232 interface
Power supply	DC 12V
Display Screen / Resolution	7" TFT LCD & Touch Screen Panel, 800 * 480
Material / Dimension	Plastic, 188(W) * 114(L) * 35 (H) mm
Work temperature	0~60 °C
Work humidity	10%~80% Relative Humidity, non condensing

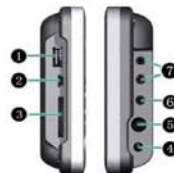
Description of each part

Front



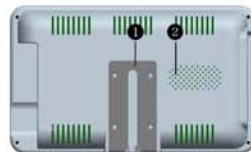
- ① POWER: Work / standby switch.
- ② RESET: Restart the system
- ③ BTN1 (Hard key 1): Shortcut key for turning on the sound
- ④ BTN2 (Hard key 2): Shortcut key for turning off the sound
- ⑤ Touch screen

Side



- ① USB end: Connect with USB mouse or USB device
- ② Mini USB port
- ③ SD card slot: Insert SD card to store the map or other data.
- ④ DC input port: DC 12V input
- ⑤ RS232 serial interface, may connect with GPS
- ⑥ Earphone jack
- ⑦ AV Input: Connect with DVD/VCD or camera AV output.

Back



- ① The fixed rack
- ② Speaker

Memory card description

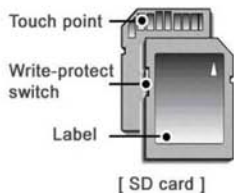
- ◆ In order to avoid damaging of the memory card please insert the card smoothly and push slightly before you draw it out.
- ◆ The memory card will be heat after a long work.
- ◆ If you don't correctly use memory card or cut the power when it being read, maybe some data will be damaged.
- ◆ If you do not want to use SD card for a long time, please put it into packing box.

1. Introduction of SD card (secure digital)

【Note】

There is a write-protect switch for SD card avoid any damages to data.

- ◆ Slide switch down, the data will be protected and you can not edit data.
- ◆ Slide switch up, and the data will not be protected, and you can edit data.
- ◆ Please make sure the write-protect switch slide up when you want to edit.



2. Insert memory card as picture following:

- ◆ The side of memory card with touch point towards display screen, the face of memory card towards the back of unit.
- ◆ Insert the memory card smoothly, avoid damaging it.



Touch screen calibration

If the touch screen can't respond your click, please run the touch screen calibration program.

1. Connect the power and press the power key to open, directly enter into the OS of Windows CE



2. Click "My Device" enter into the file manager



3. Click "Control Panel" in the file manager



4. Then click "Stylus"



5. Select "**Calibration**" in "Stylus Properties" dialog box



6. Click "**Recalibrate**" to begin the calibration.



7. During calibration, hold on your finger or touch pen on the cross center of the screen until it moves to another area on the screen.



【Operational step】 When the object is movable in screen, repeat this action. (there are 5 proof read points)

8. Arbitrarily click the screen after calibration. Return to "Stylus Properties"



9. Finish calibration;

Click **OK** accept new interpose, and exit to screen calibration.

Click **X** reservation plain is interposed, and exit to screen calibration.



Synchro software installation and usage

If you choose to install application software on pocket PC, please install 'Microsoft ActiveSync' synchro software (above 3.7 version).

You can look for 'Microsoft ActiveSync' software in CD-ROM.

[You also can download the installation program of Microsoft ActiveSync from microsoft website.](#)

1. Open the device and directly enter the operating system, then one end of the USB cable connects with Mini USB port in the left side of the fuselage, the other end connects with the USB port of your computer.



2. If you connect this device on your computer at the first time, your computer system will be hint to install the hardware equipment.

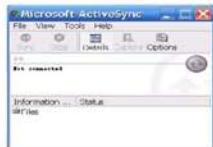
- Select (from list or appointed position to install), click "NEXT".
- Select (included the position in the search), click "Browse", select file path: DRIVERS\USB Driver



- Click "Finish" accomplish hardware addition.



3. At that time Microsoft ActiveSync will show the connection state.



Car rear view [optional] (control by reversing car control-line)





Trouble shooting

* System problem

· Power source problem

Have no way to open

1. Assemble connection whether or not correctly
One end of AC to DC adapter connects to DC power input, another end connects to power source socket.
2. Bad connection
Check every connection and socket of power source

· Screen problem

1. The screen has no picture
2. Click function, the implementation time is too long but has no way to activate.
3. In the switching process the image appears defer and standstill, leads to no way switch image smoothly.

If the unit has above any problem, please restart your system.

4. Unable rightness of screen responds to the touch click.
Please carry out calibration to touch screen. (see about [Touch screen calibration] explanation.)
5. The display screen is misty
Check that if the display screen surface has dust filth. Please simply wipe with clean and soft cloth to keep the brightness of surface.