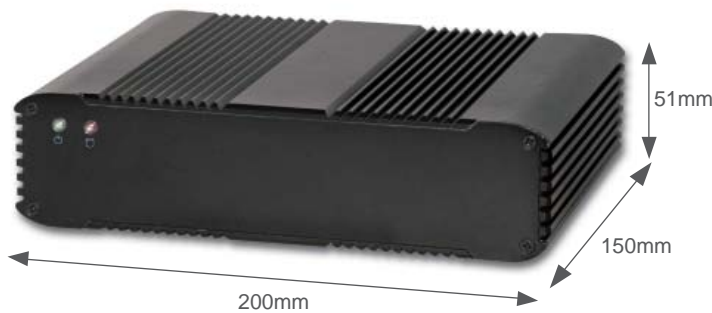




WEBS-1341

Embedded rugged fan-less system with Intel® Atom™ N455/D525 based 3.5" ECX board



FEATURES

- Fan-less solution with Dual-Core CPU
- Intel® Atom™ N455/D525 1.6GHz processor and Intel® ICH8-M chipset
- Dual Gigabit Ethernet
- Rich I/O is good for versatile applications
- Rugged and compact design for harsh environment
- Versatile mounting solutions such as Wall and Panel mount (Optional)
- Single DC 12V power input for easy system intergration
- Three RS232 and one RS232/422/485 serial ports
- One Mini-PCI Express expansion

SYSTEM

CPU	Intel® Atom™ N455 (1.6GHz) / D525 (1.8GHz) processor
FSB	667 MHz
BIOS	AMI BIOS
System Chipset	Intel® ICH8-M
System Memory	One 204-pin SO-DIMM support DDR3 up to 2GB
Storage	1 x CF, 1 x HDD
Watchdog Timer	Programmable via S/W from 1sec. to 255min.
H/W Status Monitor	Temperature (CPU and System), Voltage

REAR PANEL

Serial Port	3 x RS232 + 1 x RS232/422/485
Display	1 x VGA
USB	4 x USB 2.0
Audio Interface	N/A (internal header only)
Ethernet	2 x Gigabit Ethernet

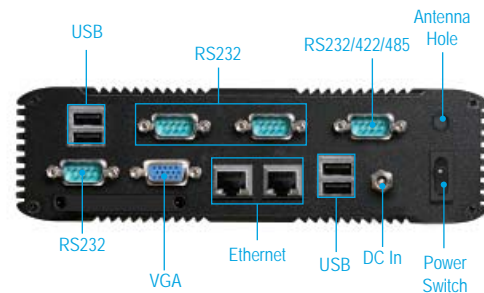
Power Supply Unit

Power Input	DC 12V
Adaptor	AC 100-240V

MECHANICAL & ENVIRONMENTAL

Operation Temperature	-5~45°C
Storage Temperature	-20~80°C
Relative Humidity	10~90% non-condensing
Dimension (WxDxH)	200x150x51 mm; 7.9"x5.9"x2"
Weight	1.6 kg

REAR I/O



ORDERING GUIDE

- **WEBS-1341-1600**
System with PEB-2781 (Atom™ N455 1.6GHz) + 1GB DDR3 + 512MB CF
- **WEBS-1341-3200**
System with PEB-2771 (Atom™ D525 1.8GHz) + 2GB DDR3 + 4GB CF