



- 15" ATOM Dual Core D525 Fanless POS
- Glossy Piano Painting Front Bezel
- New Stand with Cable Management



Specification

Motherboard Type	Intel
Form Factor	Mini-ITX
System Chipset	Intel Atom Dual Core D525
CPU Supporting	Intel D525 (45nm /1.8GHz/1M L2 cache)
CPU FSB	800MHz
DIMM Socket	2*240-pin DIMM Sockets for un-buffered Single Channel DDR3 800/667 SDRAM up to 4GB
Graphic	Integrated Intel ATOM
Audio	Realtek ALC662-6-Channel HD Audio CODEC
LAN Controller	Intel 82552V 10M/100M LAN
I/O Connector	RJ-45 x2 CashDrawer x1 & Parallel Port x1 COM port x3 USB port x4 PS/2 Mini DIN keyboard port & mouse port Audio Line-in/out and Mic-in Jacks

Mechanical

Touch	Default Taiwan 5wire resistive touch or ELO by option
Device	2.5" SATA HDD× 1 (default 160GB)
Power Supply	80W ATX power supply
Bezel	Plastic black color front bezel
Optimal Ordering	1. MSR(USB) 2. Customer Display 3. Thermal Receipt Printer 4. 2nd Display(7"/10"or12")

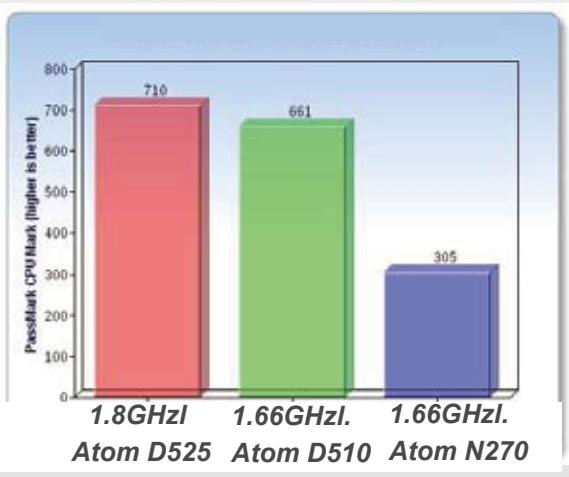
Display

Size	15" TFT LCD
Contrast Ratio	450 : 1
Brightness	250cd/m ²
Resolution	1024x768

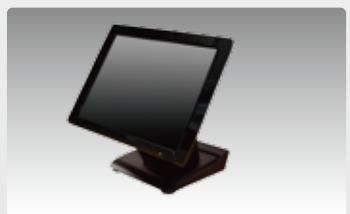


KP-150D

15" Intel Dual Core ATOM-D525 Fanless Panel PC



ATOM D525 vs. D510 vs. N270



**Piano-painting Bezel
VESA Monutable**



**Aluminum Rear Housing
Option WiFi & VFD**



Super Slim Design



IP65 Front Bezel

Puritron International Inc.

TEL: +886-2-2914-7298

FAX: +886-2-2915-6795

E-mail : info@puritron.com.tw

Website : www.puritron.com.tw