

# ABLELink®

## EH6308 Industrial Unmanaged Switch Series

### Quick Start Guide



Version 1.0

April, 2008



TEL: 886-3-5508137

FAX: 886-3-5508131

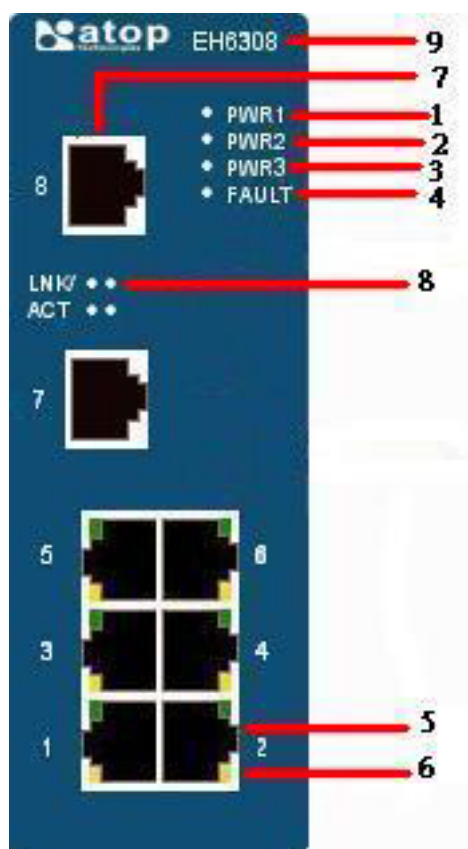
<http://www.atop.com.tw>

This document provides the customer with a brief description of Atop's EH6308 Industrial Unmanaged Switch Series, and to assist the customer to get started. For detail information and operations, please refer to the User's Manual in the product CD.

## 1. Packaging Contents

- Atop EH6308 Industrial Unmanaged Switch (x1)
- 7-pin Terminal Block for two external powers & relay connections (x1)
- Port Plugs (8 RG-45 plugs for EH6308 and EH6308G, and 6 RG-45 plugs and 2 SC fiber port plugs for EH 6308G-Fm or EH6308G-Fs)
- Wall mount kit (x1)
- Atop Industrial Managed Switch quick start guide (x1)
- Product Warranty (x1)

## 2. Front Panel and Indicators



1. When PWR1 is in, the green LED lights up
2. When PWR2 is in, the green LED lights up
3. When the PWR3 is in, the green LED lights up
4. The amber FAULT comes on when at least one of PWR1 and PWR2 is off
5. 10/100Base-T Ethernet ports (1-6)
6. Green LED for Ethernet port status (ports 1-6)
7. Ports 7 and 8. In EH6308, they are 10/100Base ports; in EH6308G, gigabit ports; in EH6308G-Fm and EH6308G-Fs, fiber ports
8. Status LED for ports 7 and 8. The upper set is for port 8 with LNK (amber) on the left and ACT (green) on the right
9. Model name

## 2. Hardware Connection

### Electrical

Step 1: Unpack the Switch, check to make sure no external damages

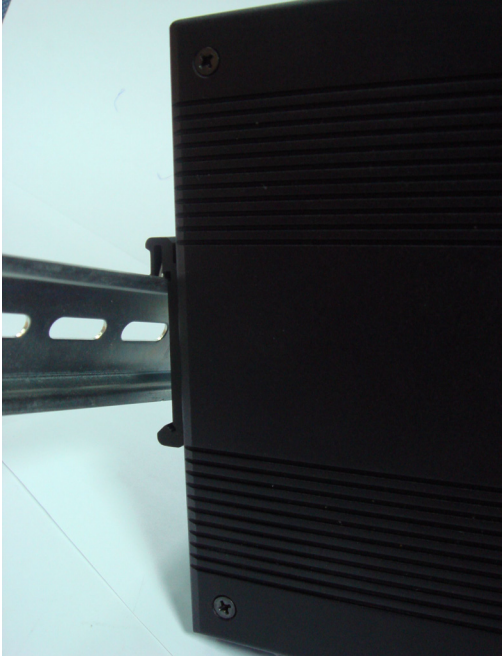
Step 2: Connect PWR3 power jack with the enclosed power supply. It is normal to see the FAULT indicator on because it is trigger by the absence of PWR1 and PWR2.

Step 3: Hook up one RJ-45 port to your LAN, and another port to your computer. Check to make sure your host computer can access the LAN

## **Mechanical**

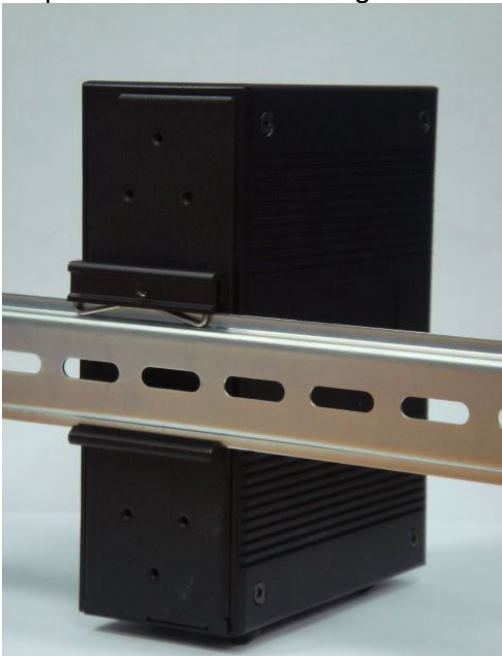
All EH Switches are equipped with a din-rail bracket attached onto the rear panel. Follow the steps below to fasten the switch to the din rail.

Step 1: Tip the switch forward and press it against the din rail after align the bracket springs to the din rail



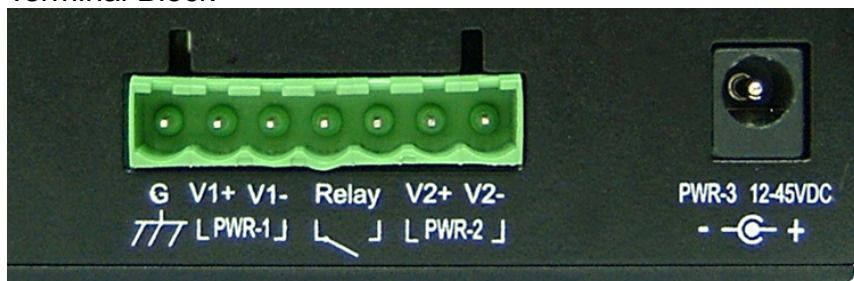
Metal Spring

Step 2: Press the bracket against the upper ledge of the din rail until it clicks



## 4. Pin assignments

### Terminal Block



### ■ Ethernet Port

Pin Number	Assignment
1	TD+
2	TD-
3	RD+
4	Not used
5	Not used
6	RD-
7	Not used
8	Not used

## 5. Cable Type, Max. Transmission and Connector

Cable	Type	Max. Length	Connector
10BASE-T	Cat. 3, 4, 5	UTP 100 m (328 ft)	RJ-45
100BASE-TX	Cat. 5 UTP	UTP 100 m (328 ft)	RJ-45
1000BASE-TX	Cat. 5/Cat. 5e UTP	UTP 100 m (328ft)	RJ-45
1000Base-SX	850μm, multi-mode	550m	SC
1000Base-LX	1310 μm, single-mode	5 km	SC

## Customer Services and Technical Supports

### 1. Contact your local dealers or ATOP Technical Support Center at:

+886-3-550-8137 (ATOP Taiwan)  
+86-21-6495-6232 (ATOP China)

### 2. Report problems via Atop's Web or E-mail:

[www.atop.com.tw](http://www.atop.com.tw), [service@atop.com.tw](mailto:service@atop.com.tw)  
[www.atop.com.cn](http://www.atop.com.cn), [service@atop.com.cn](mailto:service@atop.com.cn)