



4-Port IP50 Serial Server

■ ■ SE5404D

- 15KV ESD protection for serial signals
- Dual 10/100Mbps Fast Ethernet for redundancy with full duplex auto negotiation
- 4-port RS-232/RS-422/RS-485, baud rate up to 921 Kbps
- Rigid IP50 Metal housing, DIN-Rail and wall mount support
- Support RAW TCP Server/ TCP Client / UDP / Virtual COM / Tunneling Modes
- Configuration: Built-in Web Server /Serial Console/ Telnet / Windows-based Utility
- Monitor, manage and control industrial field devices remotely

Make Serial Devices Ready to the Network

The Industrial Serial Server SE5404D is a 4-port gateway between Ethernet (TCP/IP) and serial signal communications. It allows almost any serial device to be connected to a new or existing Ethernet network.

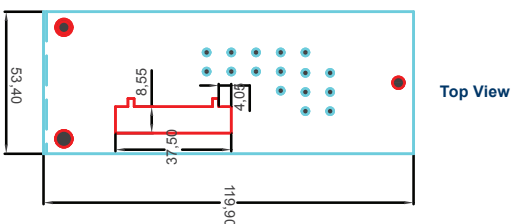
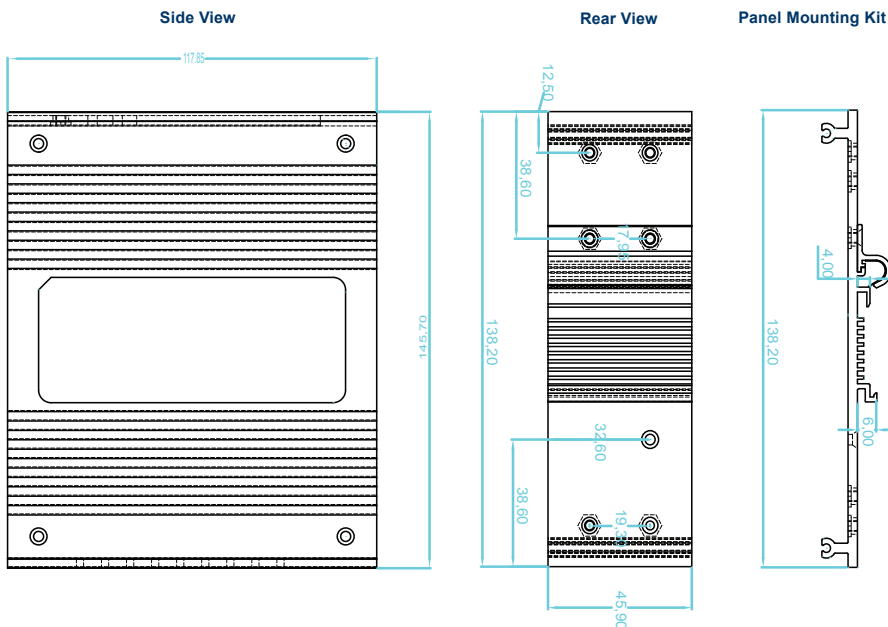
By encapsulating serial data and transporting it over to Ethernet, SE5404D offers full-duplex, bi-directional data transmission transparent between serial port and Ethernet network.

Easy to Use

Flexible configuration options enable this unit to be setup over Ethernet by Telnet, Web browser, Serial Console, or other utilities. Packed in a rugged metal housing for DIN rail or wall mount with 9~48VDC wide power input range, SE5404D is ideal for almost any industrial and manufacturing automation. ATOP Virtual COM software provides existing Windows based applications to access a serial device by mapping to a remote serial server via Ethernet.

Specially Designed for Automation Fields

In industrial and manufacturing automation fields, SE5404D is used as a field device to connect Ethernet through TCP/IP protocol directly. It is also specially designed for conjunction with PLCs, HMIs, Barcode Scanners, Data Terminals, Electronic Kanbans, Shop Floor Control Systems, and Pick-to-Light Systems.



Dimensions (unit = mm)

4-Port IP50 Serial Server



| Specifications | |
|--------------------|---|
| Ethernet | |
| Compliance | IEEE802.3 |
| Network Interface | 10/100 Mbps Fast Ethernet |
| Port | 2 |
| Transmission Rate | 10/100 Mbps Auto-detection |
| Connector | RJ-45 |
| Auto MDI/MDI-X | Yes |
| Link Mode | |
| TCP Server | Up to 8 connections or Virtual COM / Reverse Telnet modes |
| TCP Client | Up to 2 destination or Virtual COM mode |
| UDP | Up to 8 Ranges of IPs |
| Serial | |
| Interface | RS-232/422/485 Software selectable(SE5404D) RS-422/485 Software selectable(SE5404D-S5/SE5404D-Sis) |
| Ports | 4 Ports |
| Baud Rate | 300bps~921.6kbps(SE5404D/SE5404D-S5) 300bps~230kbps (SE5404D-Sis) |
| Parity | None, Odd, Even, Mark, Space |
| Data bits | 5, 6, 7, 8 |
| Stop Bit | 1,2 |
| Flow Control | None, Software:Xon/Xoff,Hardware:RTS/CTS |
| Protection | 15KV ESD / 2KV Magnetic Isolation (SE5404D-Sis only) |
| Connector | 9-pin D-Sub / 5-Pin 5.08mm lockable Terminal Block |
| Power | |
| Input | 9-48DCV, 0.65A max |
| Consumption | Max. 5.85W |
| Connector | 7-pin 5.08mm connector for redundant power input |
| LED | |
| Indicator | COM, LAN, RUN |
| Approval | |
| EMC | CE Class A, FCC Class A |
| Protection | IP50 Rated IEC/EN60529 |
| Vibration | IEC60068-2-64 |
| Shock | IEC60068-2-27 |
| Free-fall | IEC60068-2-32(ISTA Test Procedure 2A) |
| Environment | |
| Operating | 0°C~70°C(32°F ~158°F) |
| Storage | -40°C~85°C(-40°F ~185°F) |
| Humidity | 5%~95% Non-condensing |
| Dimension | |
| WxHxD | 53.4mm x 145.7mm x 119.9mm |
| Physical | |
| Weight | 900g |
| Installation | DIN-Rail mounting or Wall mount (optional) |
| Warranty | 5 years |
| MTBF | |
| Preceding | TBD |
| Software | |
| Configuration | Web Page / Telnet / Serial console / Windows Utility |
| Virtual COM | Windows & Linux port redirection software |
| Support Protocol | ICMP, TCP/IP, UDP, DHCP Client, NTP, DNS, SNMP, HTTP, Telnet, SMTP |

| Ordering Information | |
|----------------------|---|
| SE5404D | P/N:1P1SE5404D0001G 4-Port Serial Device Server, DIN-Rail, D-Sub |
| SE5404D-S5 | P/N:1P1SE5404D0003G 4-Port Serial Device Server, DIN-Rail, Terminal Block |
| SE5404D-Sis | P/N:1P1SE5404D0002G 4-Port Serial Device Server, DIN-Rail, Terminal Block, 2KV Magnetic Isolation |
| Optional Accessories | |
| Wall Mount Kit | P/N:202EH731000003G Black metal wall mount kit |
| Console Cable | P/N:50891971G 90cm RJ-45 to DB9 female console cable |
| Grounding Cable | TBD 120mm copper woven grounding cable |
| Conductive | P/N:201EH731000005G |
| DIN-Rail Kit | Conductive silver metal DIN-Rail Kit |
| US315-12 (US) | P/N:7010000000027G |
| Power Adapter | US 2P AC100~240V/DC12V 1.25A adapter for terminal block |
| US315-12 (EU) | P/N:7010000000028G |
| Power adapter | EU 2P AC100~240V/DC12V 1.25A adapter for terminal block |

Atop Technologies, Inc.

TEL : +886-3-5508137
FAX : +886-3-5508131
sales@atop.com.tw
http : //www.atop.com.tw

Design and specification are subject to change without notice.

All product names referenced herein are registered trademarks of their respective companies.



IP50 Rated
IEC/EN60529



CA_SE5404d_E : v1-110111