



MB5404D Series 4-Port Modbus Gateway

Quick Start Guide



Version 1.0 August, 2011

This document is intended to provide customers with brief descriptions about the product and assist customers to get started. For detailed information and operation of the product, please refer to the product user's manual in the product CD or Atop website.

1. PACKAGING

Check whether your package contains following items:

- ⊙ MB5404D x1
- ⊙ Quick Start Guide with Warranty Card x1
- ⊙ Product CD x1
- ⊙ 7-pin Screw Terminal Block (2ESDVM-07P) x1

Optional Accessories :

- ⊙ Wall Mount Kit (WMK-B-459) 202EH731000003G
- ⊙ Console Cable (CBL-RJ45(8P)-DB9(F)-90-C) 50891971G
- ⊙ Grounding Cable (GDC-120) 59906861G
- ⊙ Adaptor (ADP-DB9(F)-TB5) 59906231G
- ⊙ Conductive DIN-Rail Kit (CDK-S-459) 201EH731000005G
- ⊙ US315-12(US-Y) Power Adapter 50500151120009G
- ⊙ USE315-12(EU-Y) Power Adapter 50500151120019G
- ⊙ 7-pin Screw Terminal Block (2ESDPM-07P) 50707871G
- ⊙ 7-pin Screw Terminal Block (2ESDVM-07P) 50707741G

2. HARDWARE DESCRIPTION

NOTE:

1. **MB5404D** (RS-232/422/485 DB9 without isolation),
2. Press the **Default** button of MB5404D to reset to the default value

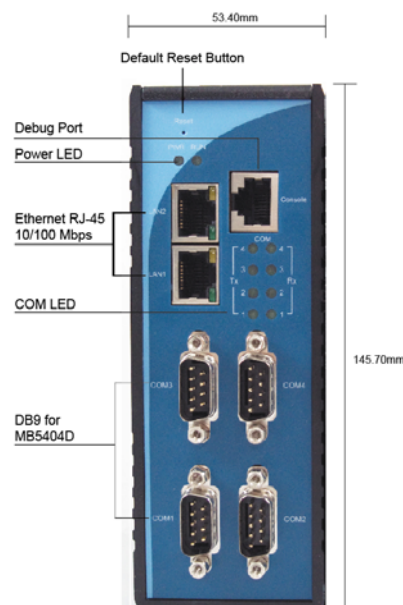


Figure 2.1. MB5404D Series interfaces

LED Indicators:

Name	Color	Status	Description
Power	Green	Off	Power is not connected
		On	Power is connected
LAN	Green	Off	Ethernet Disconnected
		Blinking	Data is transmitting on Ethernet for 100Mbps
	Orange	Blinking	Data is transmitting on Ethernet for 10Mbps
COM	Green	Off	No data is transmitting on COM port
		Blinking	Data is transmitting on COM port
RUN	Green	Off	System is not ready or halt
		Blinking	AP firmware is running normally

Installation Procedures:

Step 1: Connect MB5404D to power source

Step 2: Connect MB5404D to the Ethernet network. Use a standard straight-through or cross-over Ethernet cable. Always make sure the PC is on the same network subnet as MB5404D.

Step 3: Connect MB5404D's serial port to a serial device.

Step 4: Mount MB5404D to a Din Rail.

3 SOFTWARE SETUP

Default Network Setting:

Default User Name/Password:

LAN1 IP: 10.0.50.100

User Name: admin

Gateway: 10.0.0.254

Password: null (leave it blank)

Subnet: 255.255.0.0

LAN2 IP : 192.168.1.1

Gateway: 192.168.1.254

Subnet: 255.255.255.0

Warranty Policy

Auto IP (Dynamic IP): A DHCP server can automatically assigns the IP address and all the network settings. MB5404D supports the DHCP client function. By default, the DHCP client function on MB5404D is disabled; you may activate the DHCP client functions by executing Device View Utility (Figure 3.1)

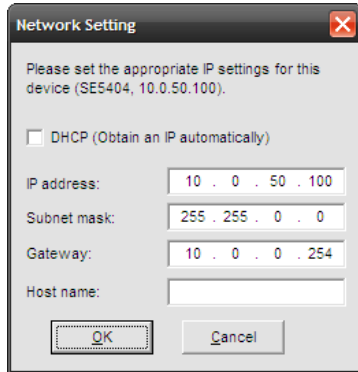


Figure 3.1. Device View Utility Dialog Window

Assign a Static IP address by:

1. Configuration by Telnet

- Telnet to MB5404D using DOS command "Telnet IP_address 23". Example: telnet 10.0.50.100 23
- MB5404D's network, link mode and COM ports settings can be configured in the telnet window

2. Configuration by Device View Utility

- Use **Device View Utility** on Product CD or our website to configure MB5404D. First click "**Config**" then assign a static IP.

3. Configuration by Web Browser

- Open a web browser, then Enter in the IP address as the MB5404D. The default user name is **admin** and default password is **null (leave it blank)**.
- The MB5404D's network, link mode and COM ports settings can be configured on different web pages.
- Click "**Save Configuration**" to save settings.

Warranty Conditions

Products supplied by Atop Technologies are covered in this warranty for sub-standard performance or defective workmanship. The warranty is not, however, extended to goods damaged in the following circumstances:

- Excessive forces or impacts
- War or an Act of God: wind storm, fire, flood, electric shock, earthquake
- Use of unqualified power supply, connectors, or maintenance procedure
- Replacement with unauthorized parts

RMA and Shipping Costs Reimbursement

Customers shall always obtain an authorized "RMA" number from Atop before shipping the goods to be repaired to Atop. When in normal use, a sold product shall be replaced with a new one within 3 months after purchase. The shipping cost from the customer to Atop will be reimbursed by Atop.

After 3 months and still within the warranty period, it is up to Atop whether to replace the unit with a new one; normally, as long as a product is under warranty, all parts and labor are free of charge to the customers.

After the warranty period, the customer shall cover the cost for parts and labor.

Three months after purchase, the shipping cost from the customer to Atop will not be reimbursed, but the shipping cost from Atop to the customer will be paid by Atop.

Limited Liability

Atop shall not be held responsible for any consequential losses from using Atop's product.

Warranty Period

Product Categories	Warranty
Serial-to-Ethernet Server	5 Years
Serial-to-WLAN Server	
Industrial Wireless Ethernet Device	
Modbus Gateway Series	
Industrial Ethernet Switch	
Embedded Serial Server	3 Years
DIN-Rail Power Supply	
Pick-to-Light System	1 Year
Auto-Identification and Data Collection-AIDC	
Power Adaptor	
Antenna	
Other Accessories	

The Warranty Certification will not be effective until an authorized stamp issued by Atop's overseas agents.

Purchase Date: / / (yyyy/mm/dd)

Serial Number:

※ATOP Customer Services and Supports

- Please contact your local dealers or Atop technical support center at the following numbers.

- +886-3-550-8137 (Atop Taiwan)
- +86-21-6495-6232 (Atop China)

- Please report the defected problems via Atop's Web site or E-mail account

Web Site:www.atop.com.tw e-mail: service@atop.com.tw

Web Site:www.atop.com.cn e-mail: service@atop.com.cn