

iModCloud QuickStart

iModCloud gives you the possibility to manage sets of iMod devices like a single one. You can control your devices from any place in the world via any device with a web browser support. iModCloud has a mobile friendly layout. All you need to have in order to start using the iModCloud service is an NPE with NX Dynamics interface.

1. Follow the steps in [NPE QuickStart \(Section: 2.2 Connecting to a PC\)](#) to get the IP address of your NPE and connect by telnet console. Make sure that your NPE has access to the Internet. You can check this by pinging an external server by using the following command:

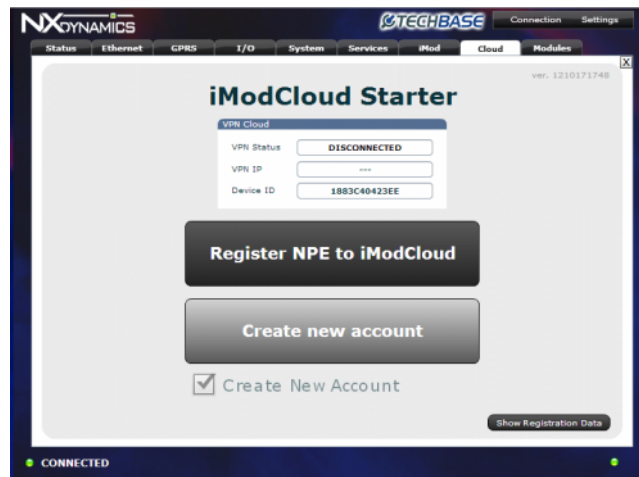
```
ping www.google.com
```

Then install the NX Dynamics interface on you NPE by using the following command:

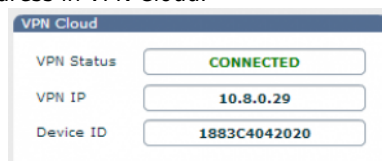
```
softmgr update nx
```

2. Start NX Dynamics via a web browser (supported browsers: Mozilla Firefox (14.0 or later) or Google Chrome (22.0 or later)) by typing YOUR_NPE_IP/nx. After successful login process go to „Cloud tab”.

3. The loaded tab will ask you to update VPN Cloud package. After successful installation click the „Register NPE to Cloud” button in order to connect your device to VPN Cloud.



After successful connection you will get IP adress in VPN Cloud.



Verification of iModCloud Starter features

This section summarizes the basic features that iModCloud offers. Once you connect your to VPN Cloud, you can:

1. iModCloud account

Go to iModCloud.com without the need to create an account. The account is automatically created on iModCloud.com. It is a unique account assigned to only to your device. Just click the „Go to iModCloud” button in order to see your device in the iModCloud. The **login data is easily accessible** on a Cloud Tab in NX Dynamics under the „Show Registration Data” button.

2. NxDynamics tunnelling

Once you have entered the iModCloud website the link for connecting **NX Dynamics through iModCloud tunneling** is presented on the device details page at iModCloud.com



3. Adding other NPE devices

You can add your NPE device to another account via iModCloud.com. In this case, you need an existing account at iModCloud.com.

You just need to clear the registration data (Show Registration Data → Clear Data), deselect the 'Create New Account' checkbox and click the 'Join NPE to existing account' button.

If you want to assign more NPEs to the account created with iModCloud Starter, you need to activate this account at iModCloud.com first.