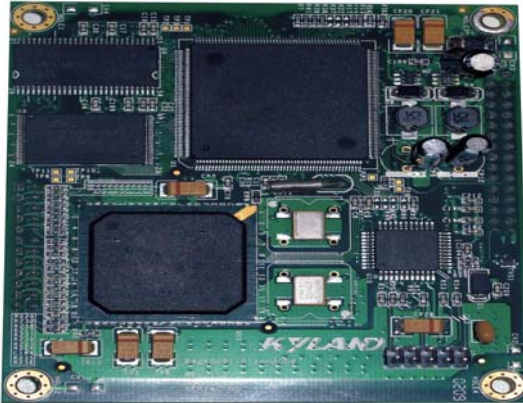


SICOM3004/3006

Embedded Managed Industrial Ethernet Switch

CE, FCC, RoHS
Chinese State Grid Certification**Overview**

SICOM3004/3006 is embedded managed industrial Ethernet switch specially designed by KYLAND for industrial applications. It supports 2 10/100Base-T(X) ports, 2 or 4 100M copper/fiber ports. It runs well in a wide range of temperature (-40 to 85°C). Based on Kyvision3.0, CLI, WEB interface, it offers concentrative management. The state-of-the-art OPC software enables the switch's management embedded in various industrial systems.

Features

- Embedded switch, supports 2 10/100Base-T(X) ports, 2 or 4 100M copper/fiber ports
- Supports DT-Ring protocols (Recovery time < 50ms), RSTP/STP (IEEE802.1w/d) redundant protocol
- Flexible network topologies: ring, chain, star and tangent ring
- Supports IGMP Snooping, QoS, VLAN, ACL, port trunking, port mirroring
- Bandwidth configuration controls port bandwidth properly
- Advanced ring topology protocol avoiding broadcast storm
- Safe MAC and port binding function, static FDB supported
- Improves network monitoring ability through RMON (group 1, 2, 3 and 9)
- Supports multiple management methods including CLI, TELNET, WEB, SNMP V1/V2/V3 and OPC
- Supports 3.3VDC power input
- Operating temperature: -40 to 85°C (-40 to 185°F)
- Embedded installation
- Unified management software for SICOM series: Kyvision3.0

Technical Specifications**Standard**IEEE802.3
IEEE 802.3uIEEE 802.3x
IEEE802.1d
IEEE802.1w
IEEE802.1p
IEEE802.1q
Store and forward switching mode**Network**

Ring, chain, star and tangent ring network topology

Interface

Optional Ports: 2 (SICOM3004) or 4 (SICOM3006) 100M copper/fiber ports
 10/100M Copper Ports: 2 x 10/100Base-T(X) ports
 Input Terminal: Samtec's board stackers
 one pcs with double row and 16 pins per row (J5), two pcs with double row and 6 pins per row (J6) (SICOM3004);
 one pcs with double row and 16 pins per row (J5), one pcs with double row and 6 pins per row (J6, J7) (SICOM3006)
 CONSOLE Interface: RS232
 LED Indicator: RUN1, RUN2, ALARM1, ALARM2, 10M/100M, LINK/ACT (1-6)

PerformanceBackplane switching capacity: 5.6G
MAC Address Table Size: 8K**Cable**

Twisted Pair: 0-100m
 Multi Mode Fiber: 1310nm, 0-5km (100Mbps)
 Single Mode Fiber: 1310nm, 0-40km; 1550nm, 0-80km

Power Requirements

Power input: 3.3VDC (3-5.5VDC)
 Power terminal: Samtec's board stacker
 Power consumption: < 10W

Physical Characteristics

Installation: Embedded module
 Module dimensions (WxHxD): 95x25x80mm (3.74x0.98x3.15 in.) (SICOM3006), 80x25x80mm (3.15x0.98x3.15 in.) (SICOM3004), 166x25x178mm (6.54x0.98x7.01 in.) (SICOM3006-test), 127x25x178mm (5x0.98x7.01 in.) (SICOM3004-test)
 Weight: 0.1kg (0.220 pound)

Environmental Limits

Operating Temperature: -40 to 85°C (-40 to 185°F)
 Storage Temperature: -40 to 85°C (-40 to 185°F)
 Ambient Relative Humidity: 0 to 95% (non-condensing)

MTBF

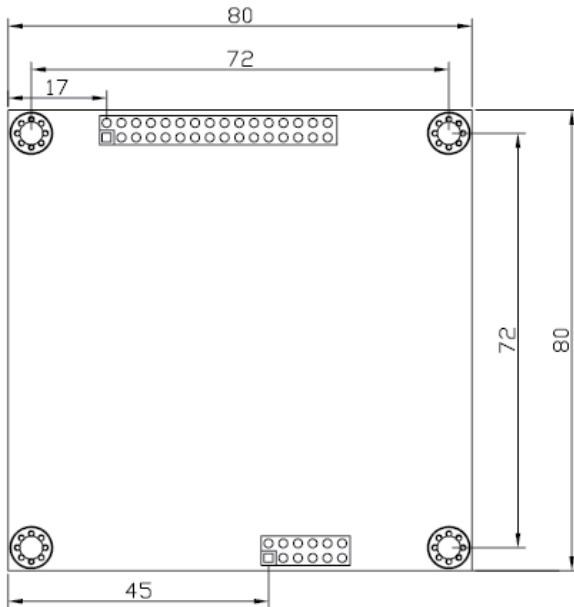
35 years

Warranty

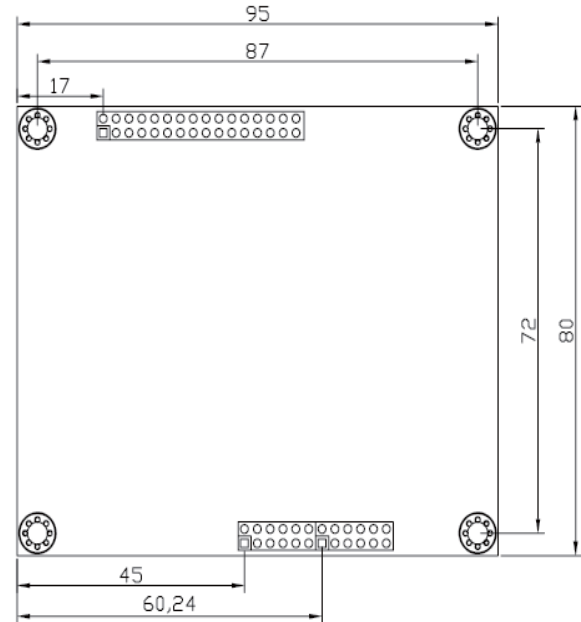
5 years

Mechanical Drawing

SICOM3004



SICOM3006



Ordering Information

Model	Description
SICOM3004	Embedded managed Ethernet switch with 2 10/100Base-T(X) ports, RJ45 connector and 2 100FX or 10/100Base-T(X) optional ports
SICOM3006	Embedded managed Ethernet switch with 2 10/100Base-T(X) ports, RJ45 connector and 4 100FX or 10/100Base-T(X) optional ports

Power supply: 3.3VDC

Accessories

Model	Description
SICOM3004-test-2S-2T	SICOM3004 test motherboard, offers 2 x 100Base-FX ports, single mode, 2 x 10/100Base-T(X) ports, RJ45 connector
SICOM3004-test-2M-2T	SICOM3004 test motherboard, offers 2 x 100Base-FX ports, multi mode, 2 x 10/100Base-T(X) ports, RJ45 connector
SICOM3004-test-4T	SICOM3004 test motherboard, offers 4 x 10/100Base-T(X) ports, RJ45 connector
SICOM3006-test-4S-2T	SICOM3006 test motherboard, offers 4 x 100Base-FX ports, single mode, 2 x 10/100Base-T(X) ports, RJ45 connector
SICOM3006-test-4M-2T	SICOM3006 test motherboard, offers 4 x 100Base-FX ports, multi mode, 2 x 10/100Base-T(X) ports, RJ45 connector
SICOM3006-test-2S-4T	SICOM3006 test motherboard, offers 2 x 100Base-FX ports, single mode, 4 x 10/100Base-T(X) ports, RJ45 connector
SICOM3006-test-2M-4T	SICOM3006 test motherboard, offers 2 x 100Base-FX ports, multi mode, 4 x 10/100Base-T(X) ports, RJ45 connector
SICOM3006-test-6T	SICOM3006 test motherboard, offers 6 x 10/100Base-T(X) ports, RJ45 connector

Power supply for accessories: 24VDC

Please visit our website: www.kyland.cn for the latest updates.