

# **PT-150FN**

## **LCD POS System**



## **User Manual**

# Index of Contents

<u>0. Before Installation</u> .....	3
<u>1. Appearance</u> .....	4
<u>2. Control Panel</u> .....	6
<u>2.1 Push Button</u> .....	6
<u>3. Rare Panel I/O Connector</u> .....	7
<u>4. Hardware Installation</u> .....	8
<u>5. Touch Driver Installation</u> .....	9
<u>5.1 Liyitec Touch</u> .....	9
<u>5.2 ELO Touch</u> .....	14
<u>6. Cleaning and Safety</u> .....	21
<u>6.1 Cleaning Touch LCD Monitor</u> .....	21
<u>6.2 Screen</u> .....	21
<u>6.3 Case</u> .....	21
<u>6.4 Safety</u> .....	21
<u>Care and handling of your touch monitor</u> .....	22
<u>7. Troubleshooting</u> .....	23
<u>8. Specifications</u> .....	24

## Attention

1. This manual contains important information for the proper setup and maintenance of the products. Before setup and using of the products, please read through this manual clearly.

2. This specification shall apply only to the product(s) coming along with this manual inside.

3. The specification may be modified without any notice in advance. Please inquire your supplier for latest specification, driver, or manual.

## **0. Before Installation**

When unpacking please check you have the following items.

- ◆ PT-150FN Machine
- ◆ Accessory Package
  - User Manual
  - Driver CD-ROM
  - Power cord

# 1. Appearance

Front View



Back View



Left Side View





Right Side View



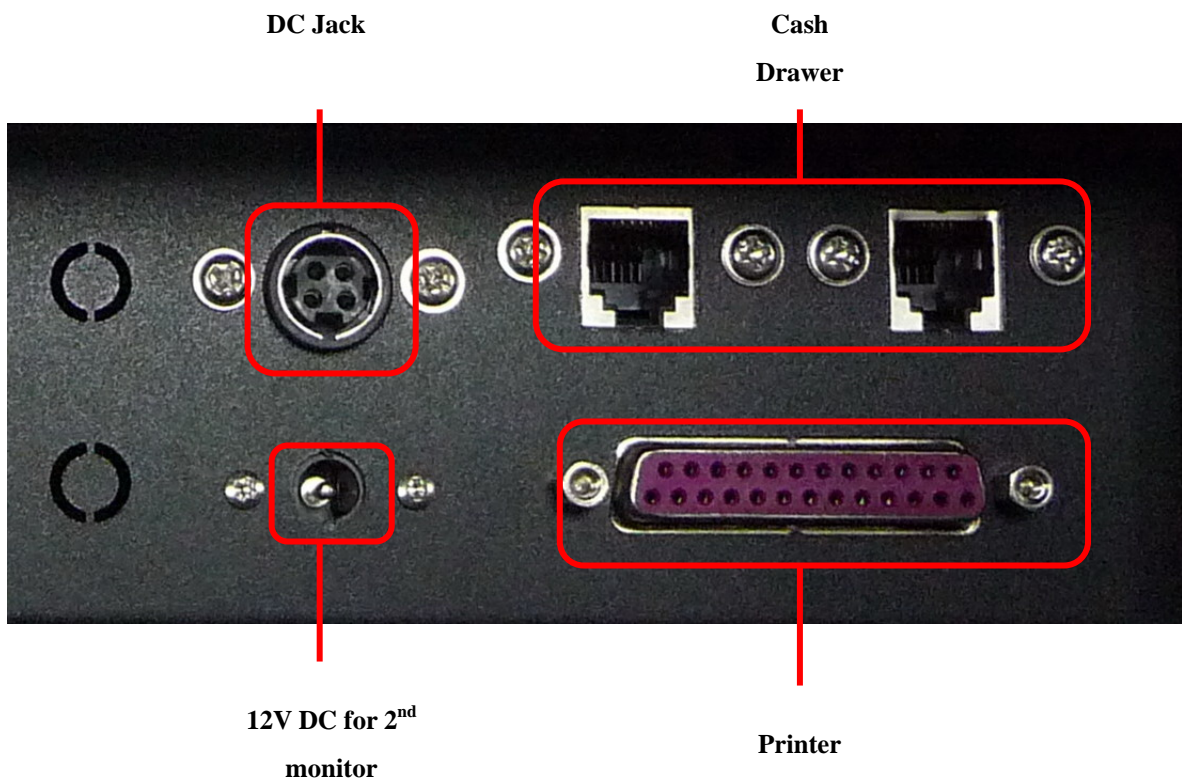
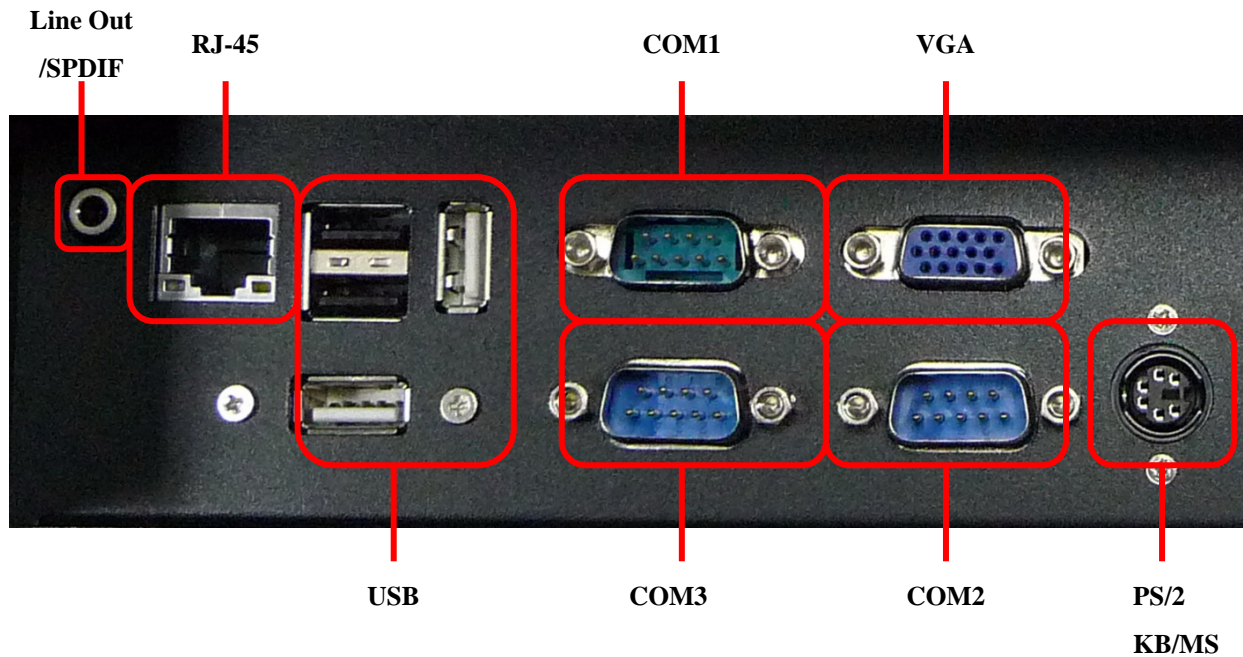
## 2. Control Panel



### 2.1 Push Button

Push Button		Description of Function
P	Power On/Off	
	HDD LED	
	Power LED	
+ -	Reserved	
R	Reset	

### 3. Rare panel I/O Connector



## 4. Hardware Installation

1. Connect the adaptor power cord to PT-150FN



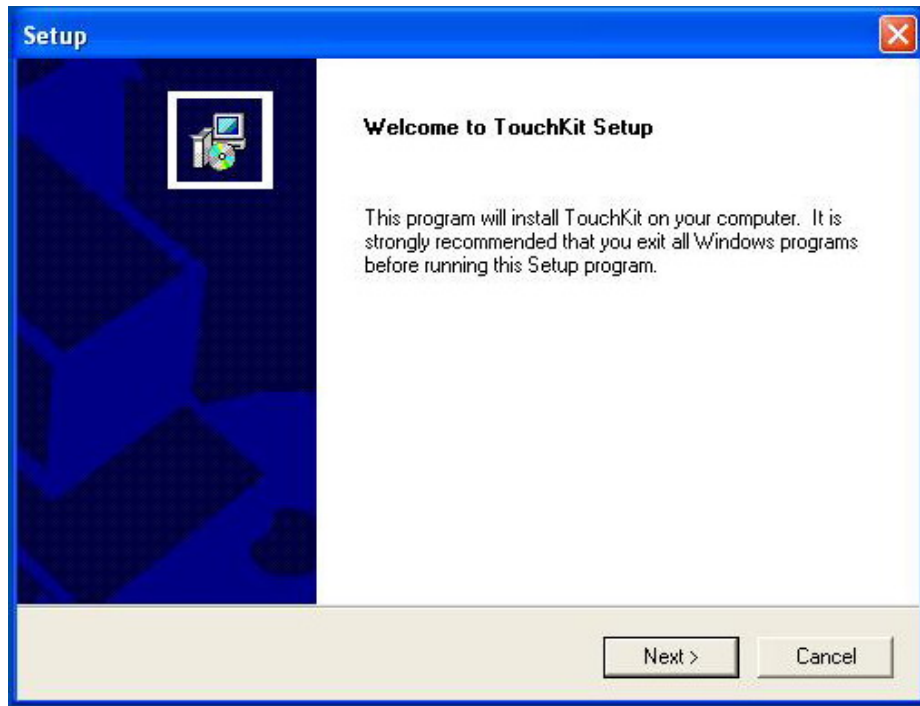
2. Connect the power cord to an AC power socket



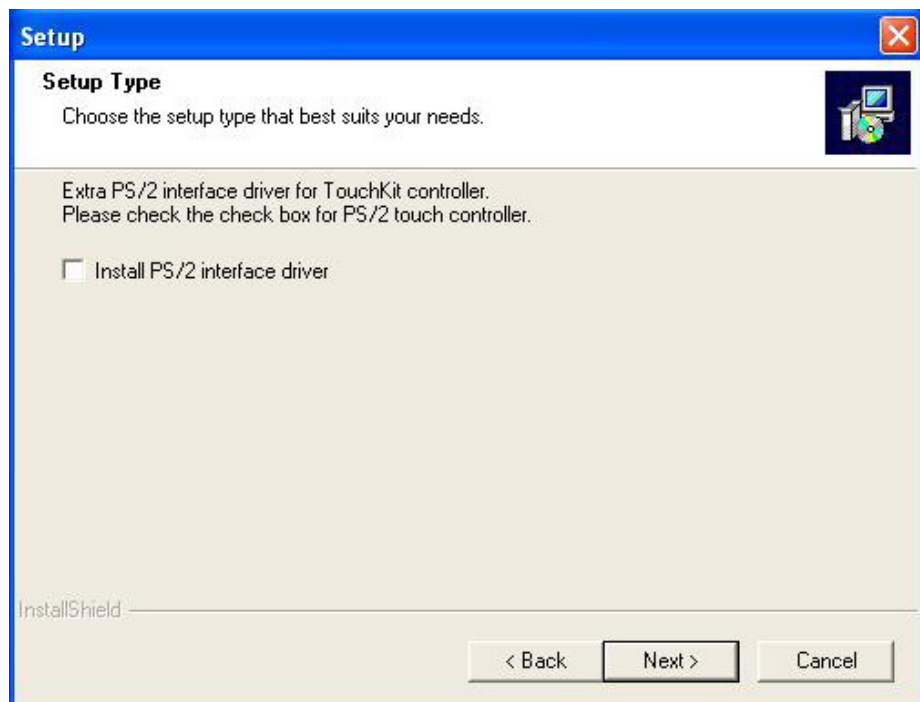
## 5. Driver Installation

### 5.1 Liyitec Touch

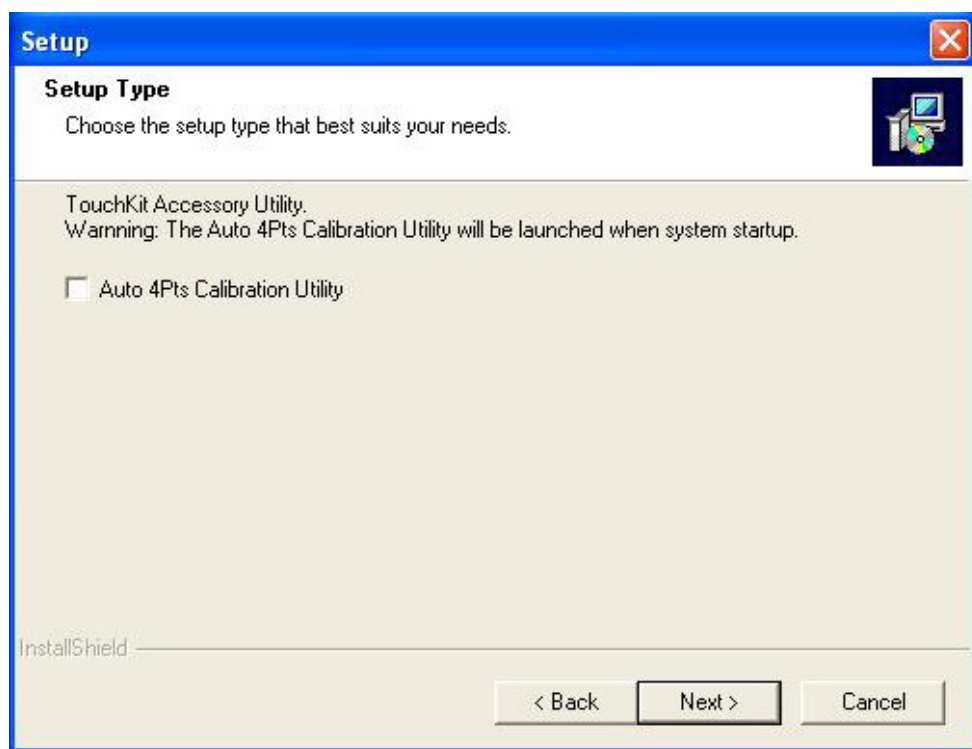
1. Double click on “setup.exe” in driver folder and then press “Next” button to start driver installation.



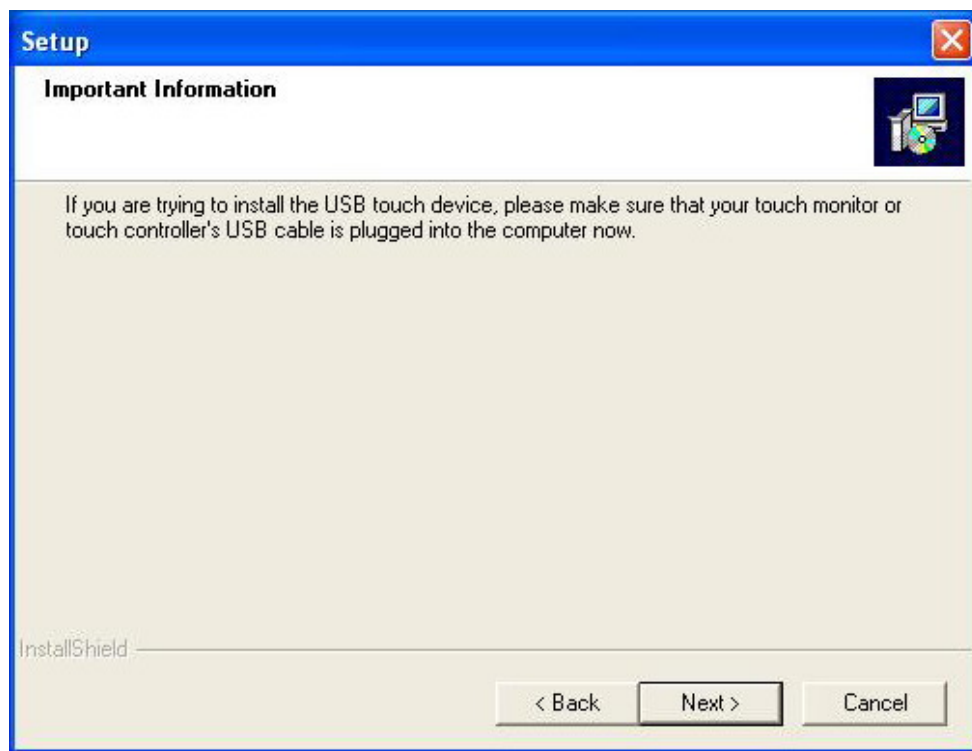
2. Press “Next” to continue.



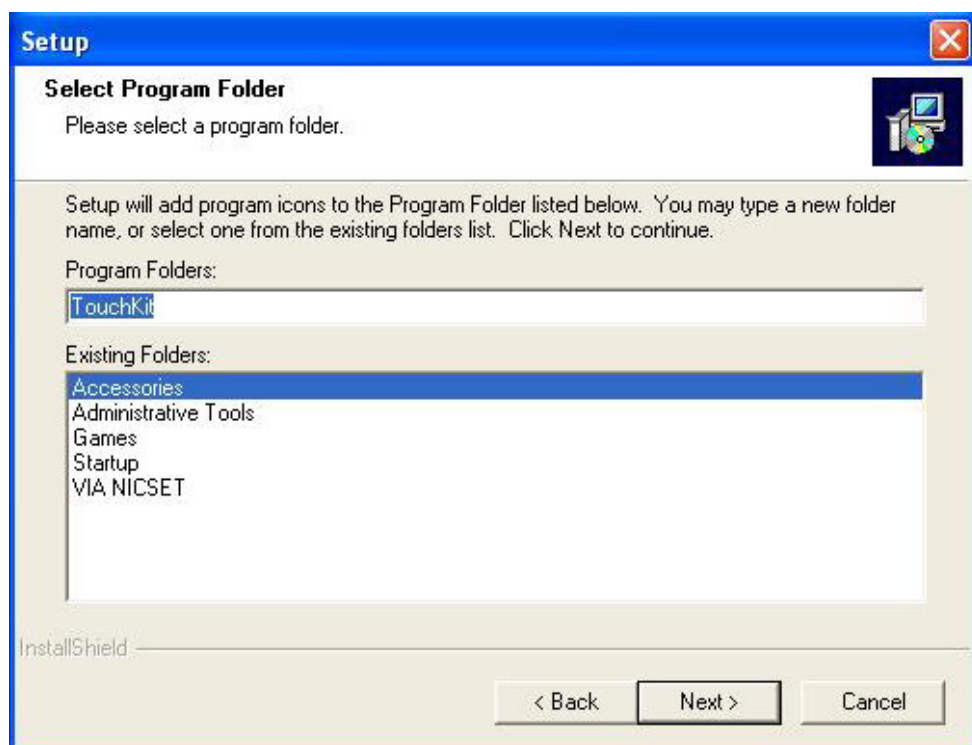
3. Press “Next” to continue.



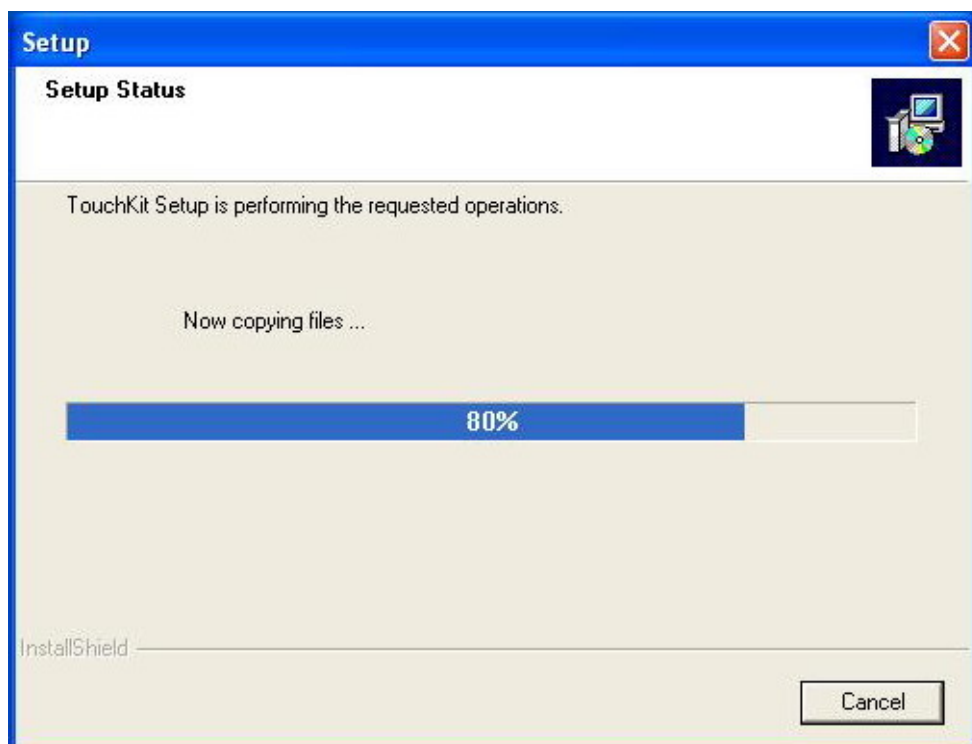
4. Press “Next” to continue.



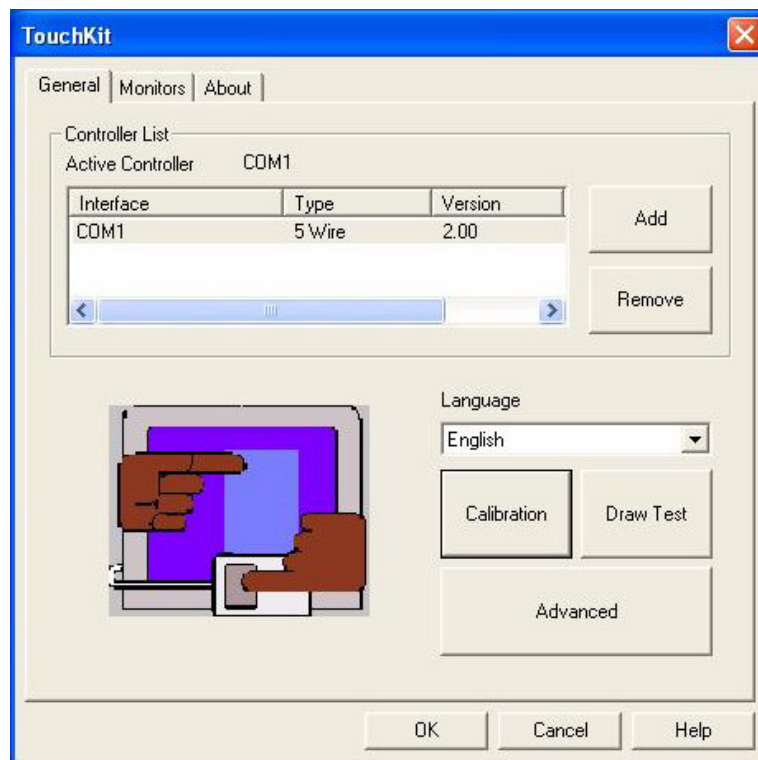
5. Press “Next” to continue.



6. Wait the setup program copying files.



7. Your Touch will be shown in this form.

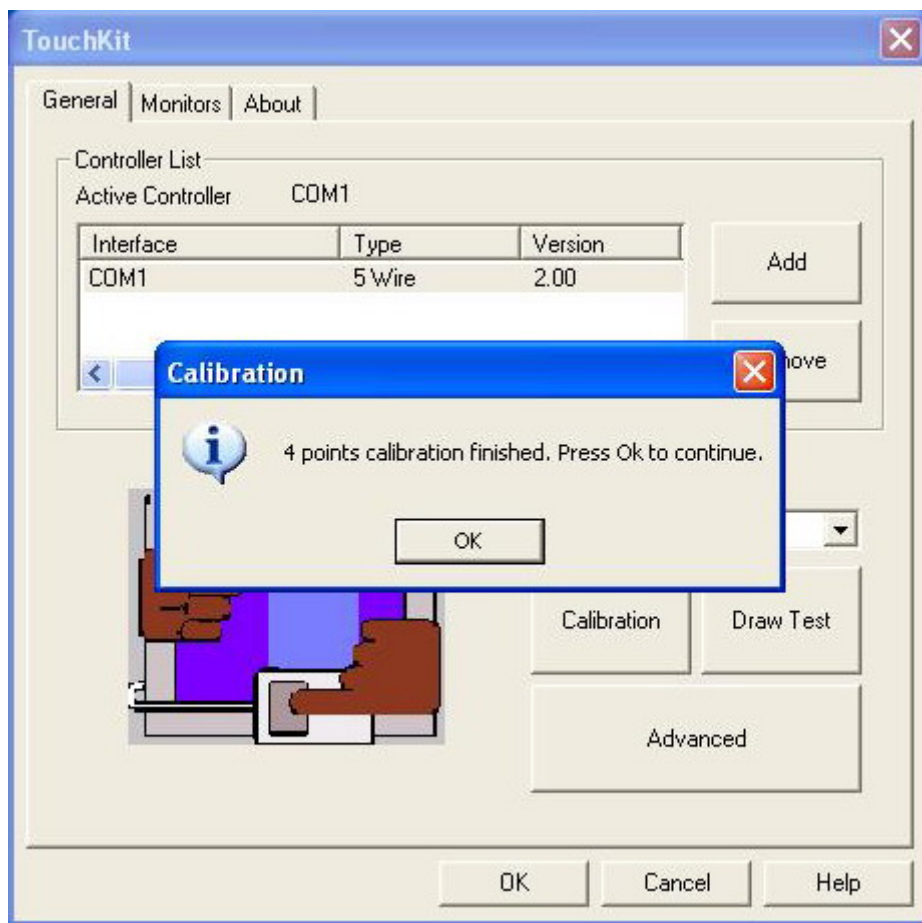


8. Press the “Calibration” button to process the four points calibration.

Please touch the blinking symbol until stop blinking.



9. Press “OK” to finish.



## 5.2 ELO Touch

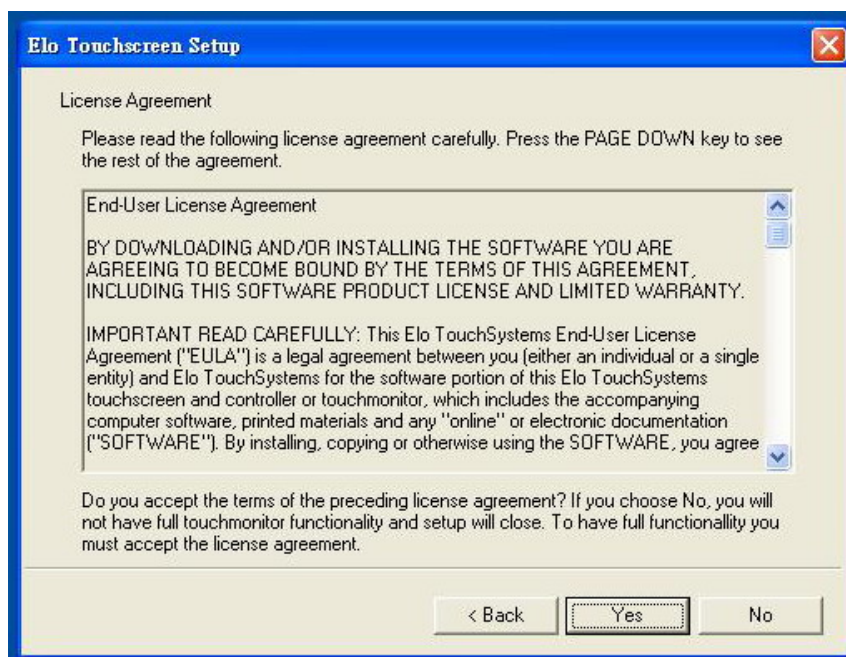
1. Insert Driver CD-ROM into CD-ROM driver. The setup program will auto run. If the setup program does not auto run, click the “EloCD.exe” program in the Driver CD-ROM. Press “Install Driver For This Computer” to start driver installation.



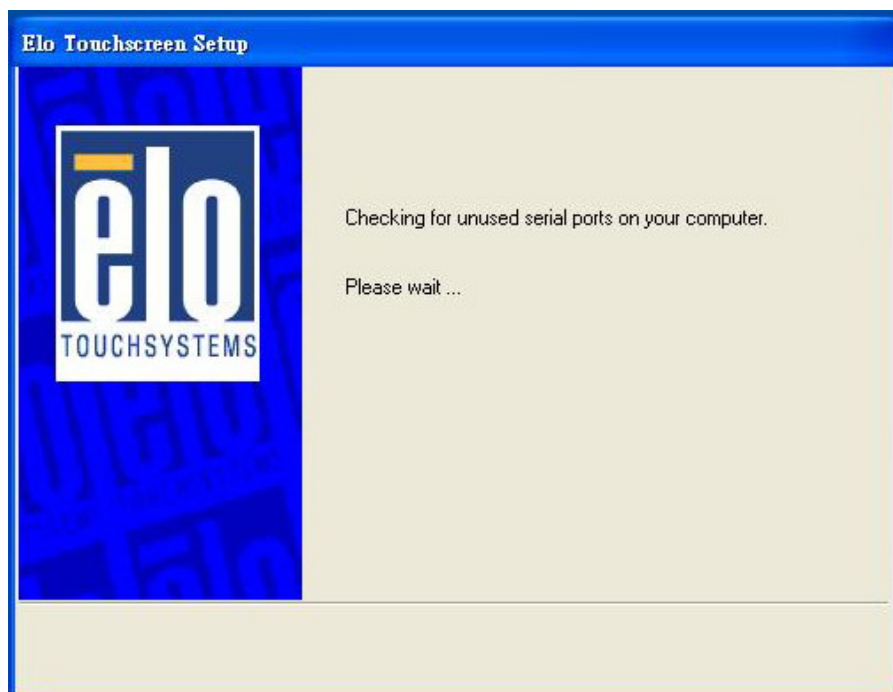
2. Check “Install Serial Touchscreen Drivers and press “Next”.



3. Read the License Agreement and then press the “yes” button.

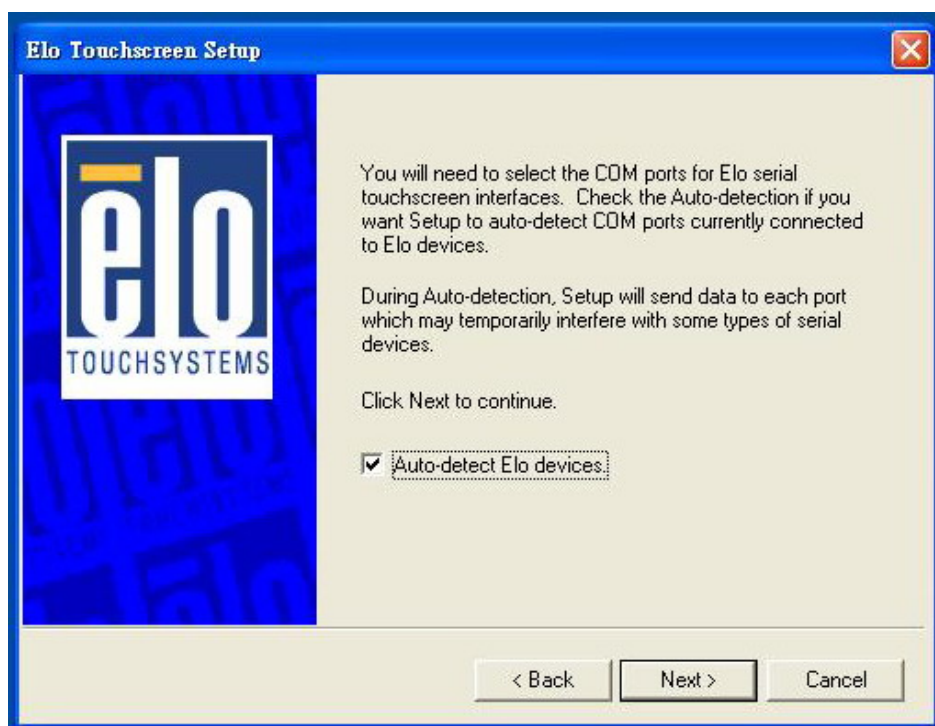


4. Wait the setup program checking serial ports.





5. Check “Auto-detect Elo devices” to select the COM port that connected to Elo devices.

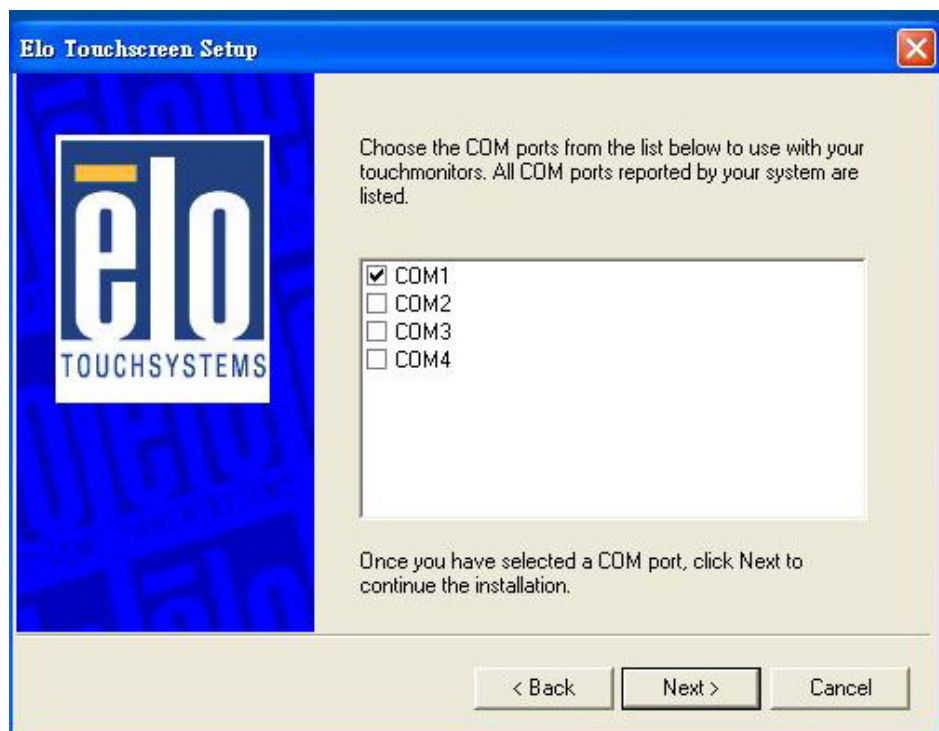


6. Wait the setup program searching for connected touchscreen.

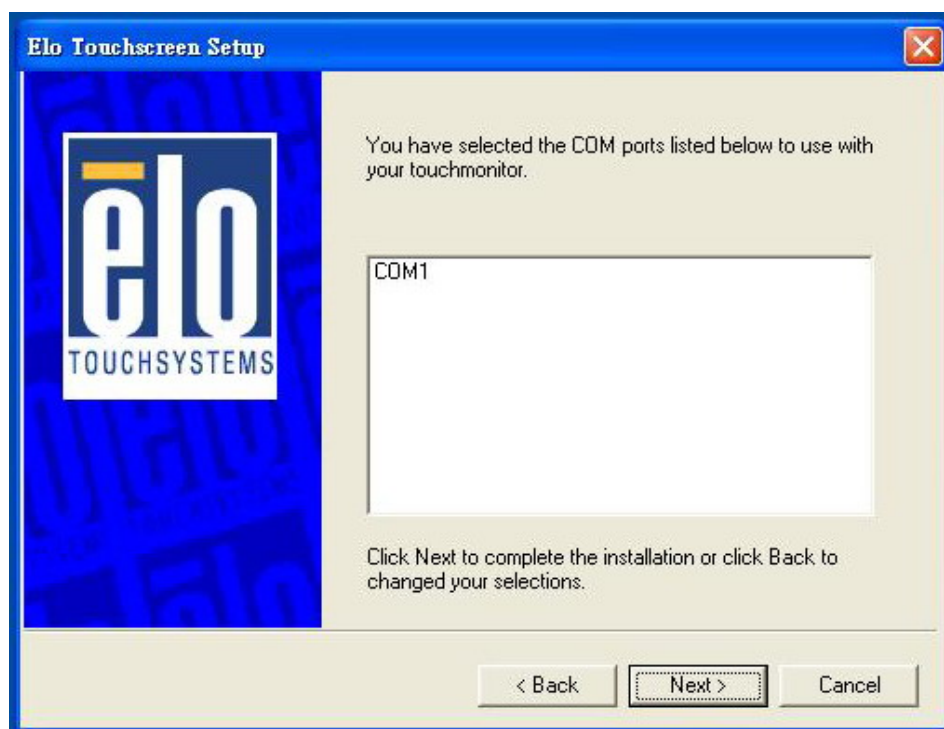




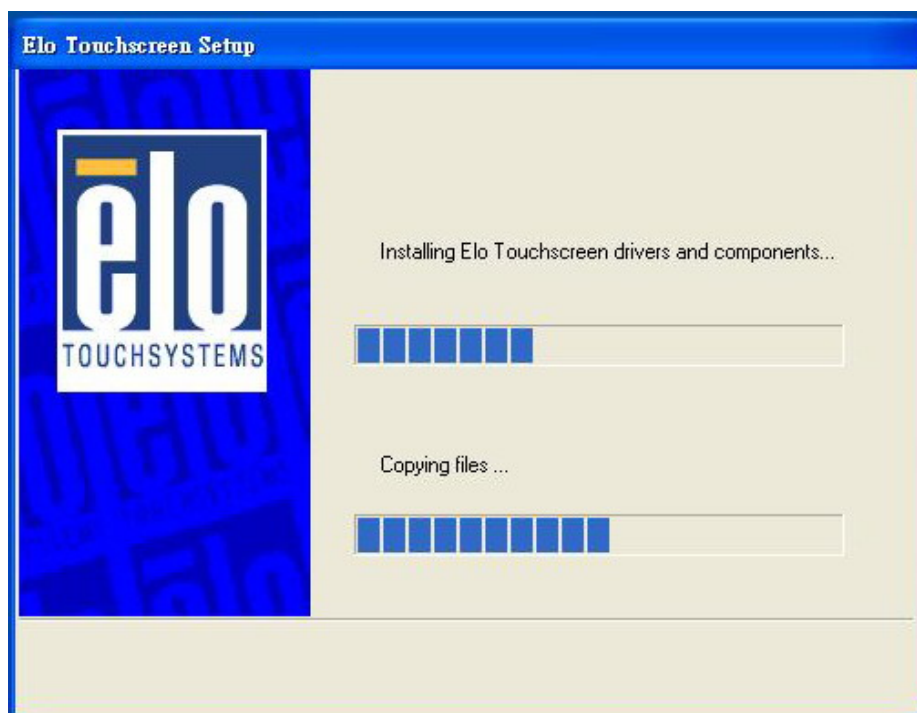
7. Choose one COM port and press "Next" to continue.



8. Make sure the COM port listed and press "Next" button.



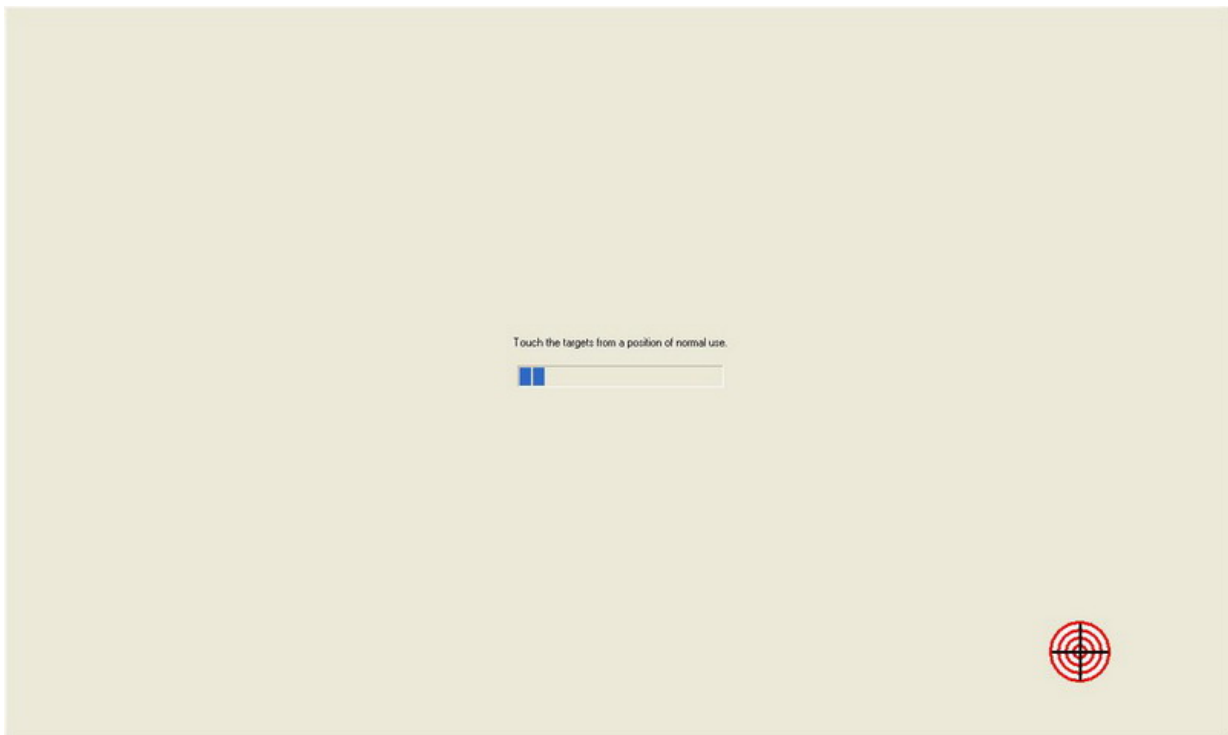
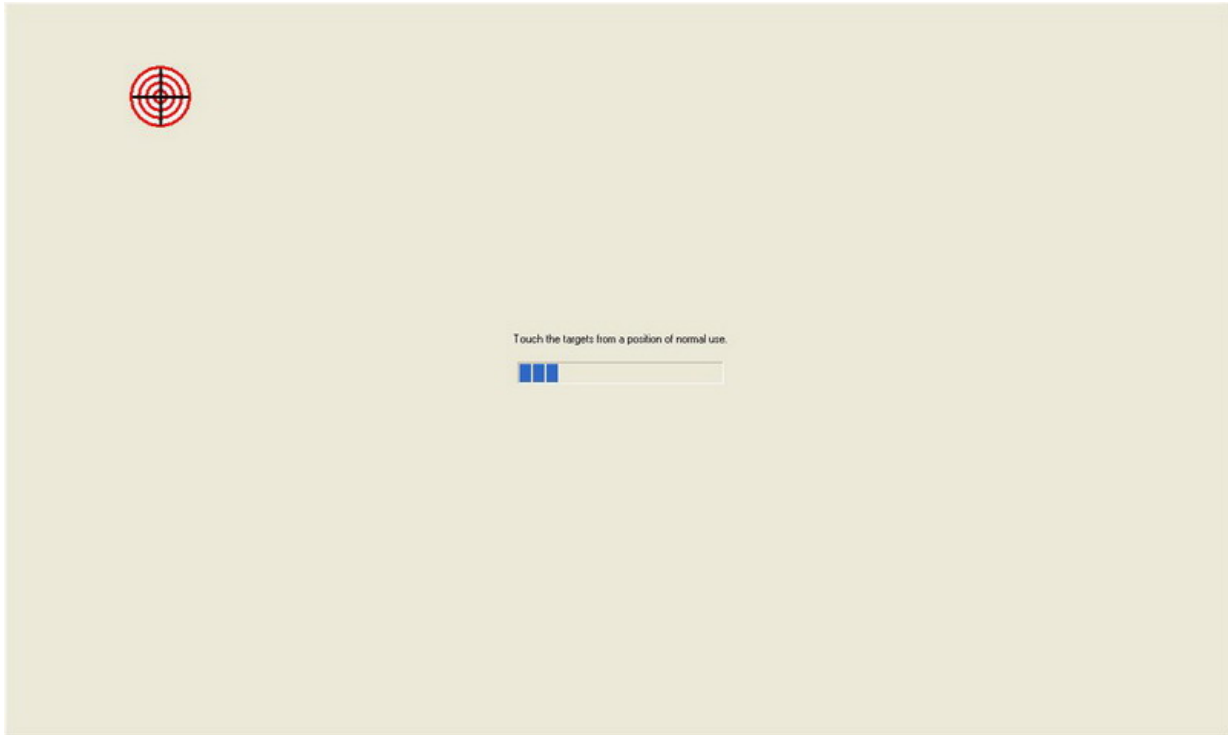
9. Wait setup program to complete.

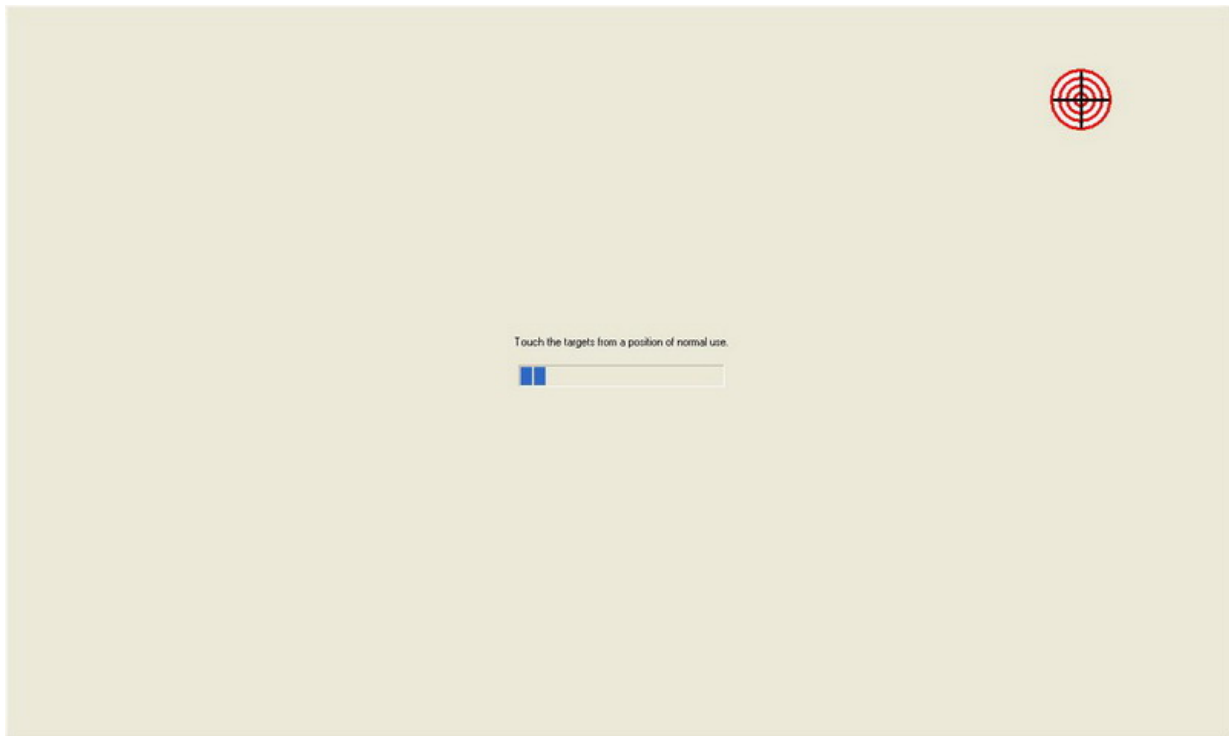


10. Check “Calibrate Elo Touchscreen Monitors” and press “Finish” button to complete driver setup and start to calibrate touchscreen.

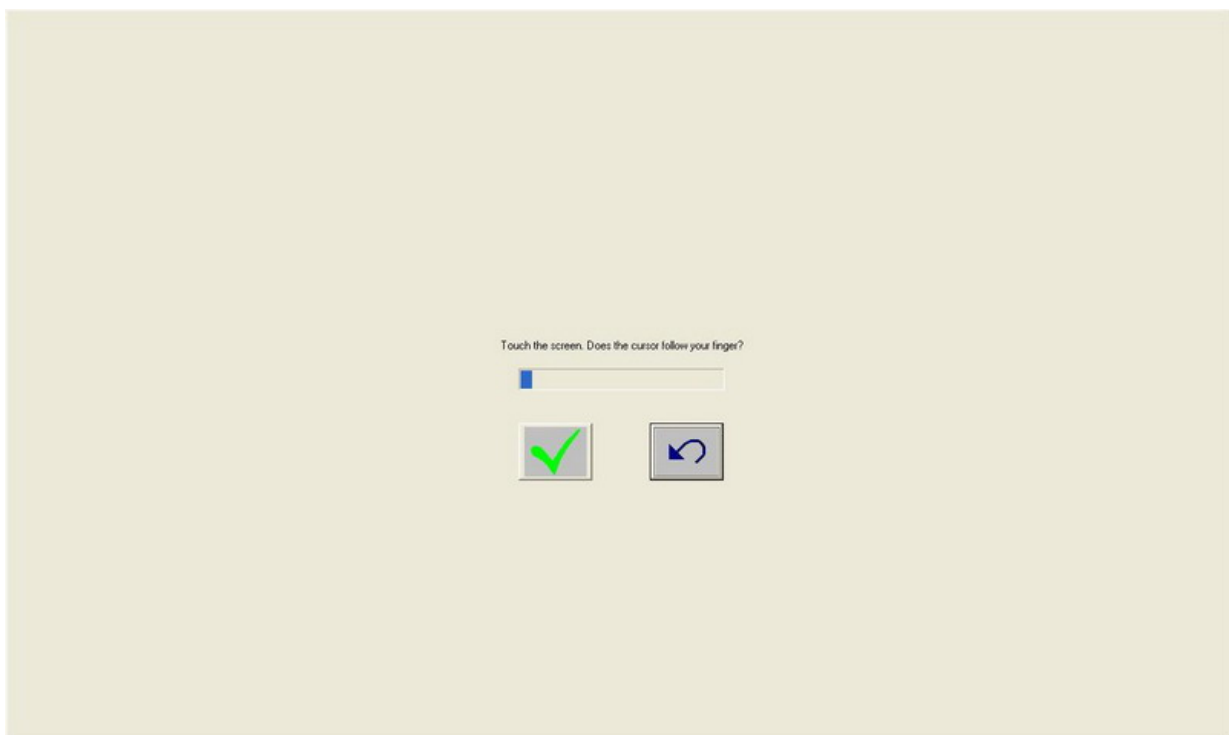


11. Press the targets with one finger to calibrate touchscreen.





12. Press the “✓” button to finish calibration.



## **6. Cleaning and Safety**

### **6.1 Cleaning Touch LCD Monitor**

Before cleaning, please power off the computer system and disconnect the AC outlet to prevent the damage. After finishing of cleaning, please make sure the monitor is completely dry before you reconnect the cables and power it on. Do not use any liquid or spray cleaners directly on surface of screen or cabinet. Please use a soft, clean, lint-free cloth with cleaners to clear your monitor.

### **6.2 Screen**

Please use a soft, clean, lint-free cloth to remove the dust and dirt from your monitor. For the fingerprints and smudges, please use a soft cloth with cleaners to clean them.

### **6.3 Case**

Please clean the cabinet with a soft cloth slightly moistened with a mild detergent solution. Please rinse the cloth with clear water, wring it dry, and wipe the cabinet to remove any detergent residue.

### **6.4 Safety**

- (1) To reduce risk of electric shock, please follow all safety notices, never open the case by yourself, and turn off the power before cleaning.
- (2) The monitor is equipped with a power cord. (The type of power cord may be different according to different countries.) The power cord plug only fit into a safety ground outlet. Do not attempt to fit the plug into an outlet that has not been configured for this purpose. Do not use a damaged power cord. Please use the only power cord that comes with your monitor. Using an unauthorized power cord may invalidate the warranty of the products.
- (3) Please do not insert or block anything inside the four internal edges of the screen.
- (4) Please remain dry for monitor when you use. Please do not pour liquid into or onto machine. If your computer becomes wet, please do not attempt to repair by yourself and please ask a qualified service technician to check it before you turn on the power.

## Care and handling of your touch monitor

The following tips will help you keep your touch monitor functioning at the optimal situation:

- Please protect your touch monitor away from extremely high or low temperatures.
- Please keep your touch monitor dry and away from humid environment.
- Please do not wash with a wet cloth or pour fluid on it.
- Under the condensation for your touch monitor, please do not power on until the condensation is evaporated completely.
- Please keep your touch monitor away from bumps and drops.
- Please keep your touch monitor away from dust, sand, and dirt.

## 7. Troubleshooting

### ⑦ Can not turn this computer on

☞ Check if the power cord is properly connected. If not, connect it again.

☞ Press the “P” button to turn it on again.

### ⑦ The image is distorted, flashes or flickers

☞ Select the correct resolution, refresh rate and make adjustments.

### ⑦ The image is displaced in one direction

☞ Select the correct resolution, refresh rate and make adjustments.

### ⑦ The image is blurred

☞ Change the resolution, refresh rate and make adjustments.

## 8. Specifications

Specification	
Monitor Size	15"; 1024x768
Touch Panel	Taiwan 5W resistive
CPU	ATOM N270-1.6GHz
Chipset	Intel 945GSE+ICH7M
Memory	1GB DDR2 RAM up to 2GB
Storage Device	2.5" 80GB SATA HDD
Lan	10/100 /1000 BASE-T
VGA Port	1
Serial Port	3
Parallel Port	1
USB Port	Rear*4
RJ-45	2
Audio Jack	Line-out*1
Power Supply	80W Adapter



## Appendix A

### BIOS Settings

#### 1. The Main Menu

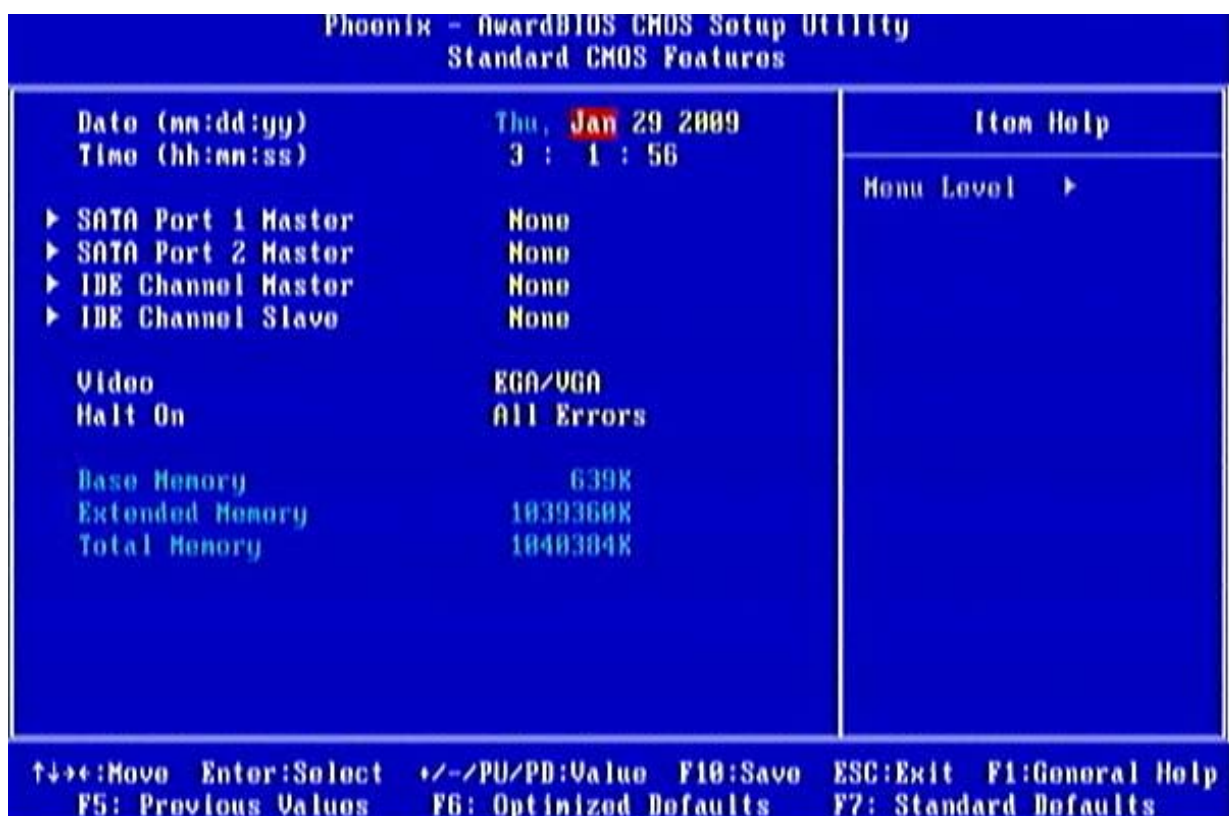
Once you enter the Award BIOS CMOS Setup Utility, the Main Menu will appear on the screen. The Main Menu allows you to select from ten setup functions and two exit choices. Use the arrow keys to select the setup function you intend to configure then press <Enter> to accept or enter its sub-menu.



We strongly recommend that you avoid making any changes to the chipset defaults. These defaults have been carefully chosen to provide the absolute maximum performance and reliability.

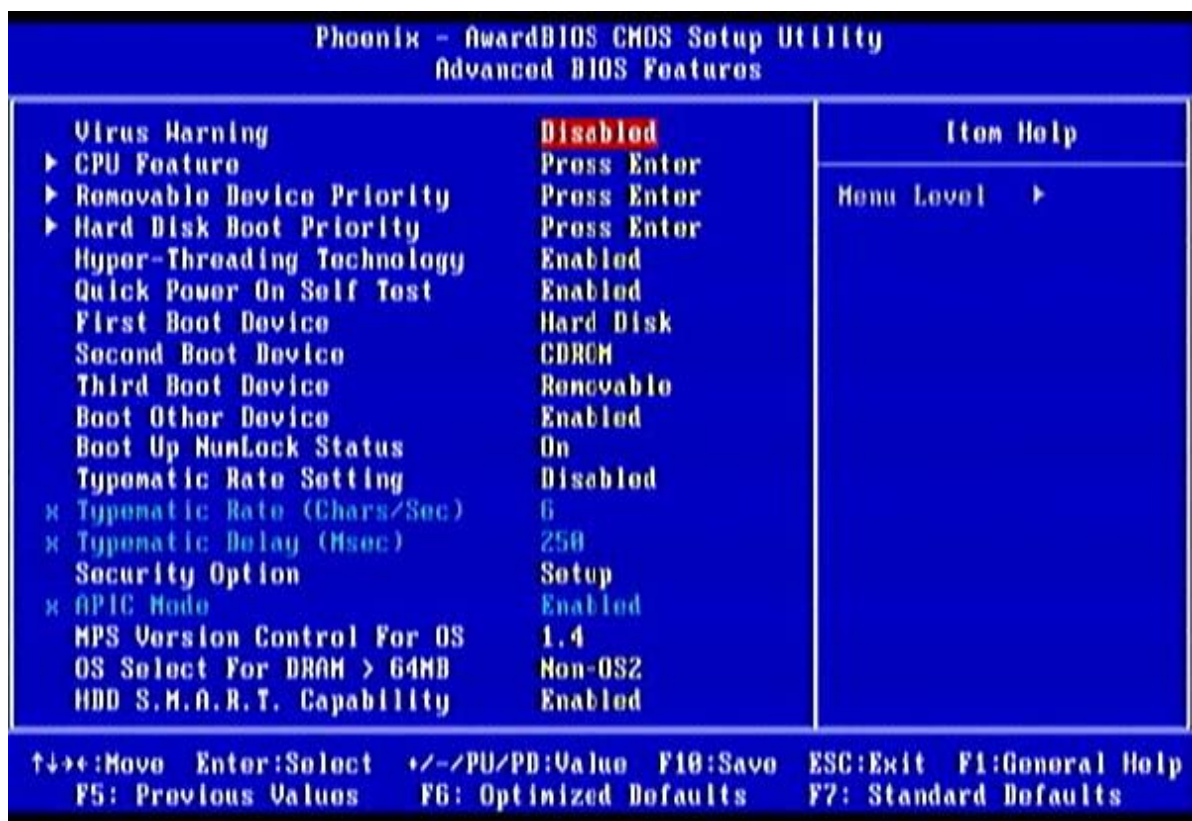
## 2. Standard CMOS Setup Menu

The items in Standard CMOS Setup Menu are divided into 10 categories. Each category includes no, one or more than one setup items. Use the arrow keys to highlight the item and then use the <PgUp> or <PgDn> keys to select the value you want in each item.



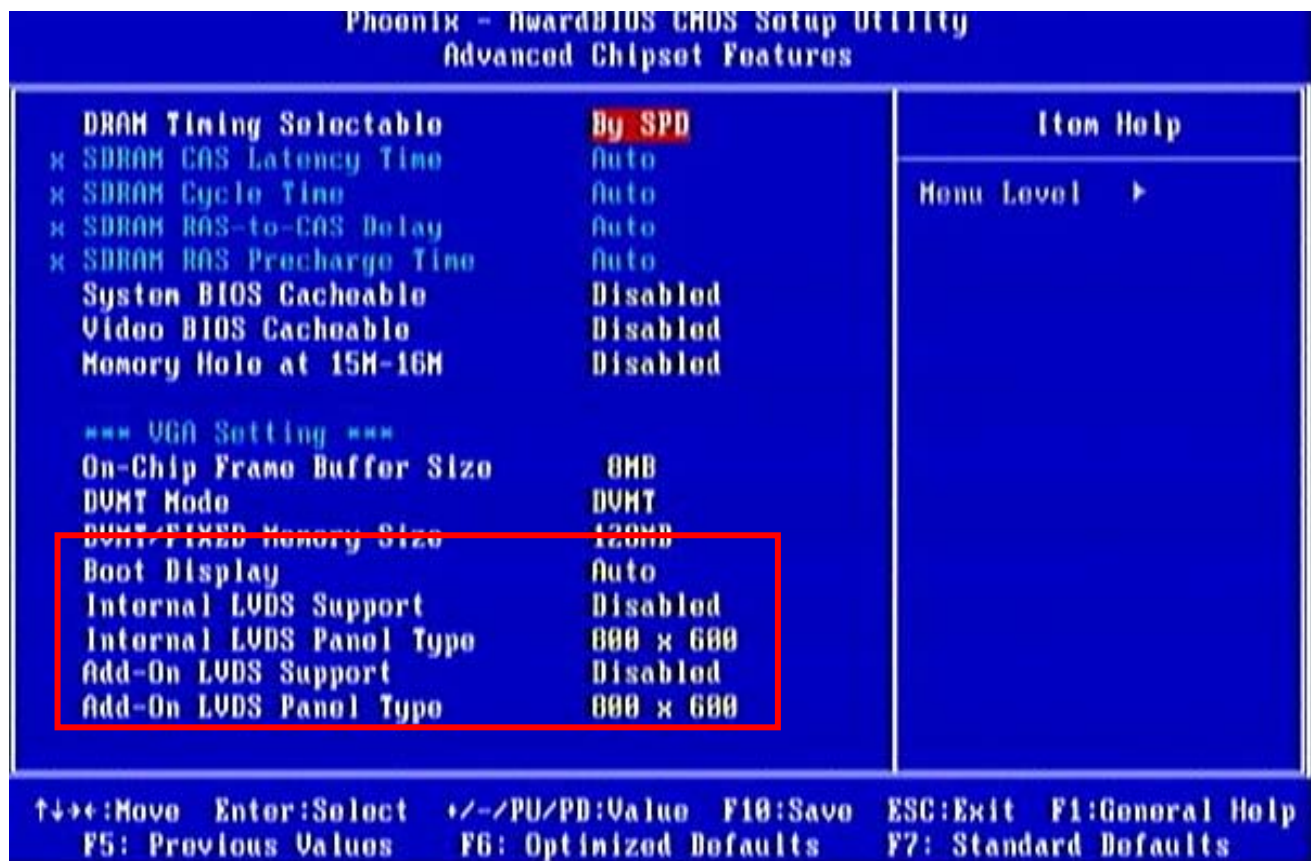
### 3. Advanced BIOS Features

This section allows you to configure and improve your system and allows you to set up some system features according to your preference.



#### 4. Advanced Chipset Features

Since the features in this section are related to the chipset on the CPU board and are completely optimized, you are not recommended to change the default settings in this setup table unless you are well oriented with the chipset features.



##### Boot Display

This item is to select Display Device that the screen will be shown when booting.

The setting should be “CRT + Add-On”.

##### Internal LVDS Support

This item is to select whether the internal LVDS port is used.

The default setting is “Disabled”.

##### Internal LVDS Panel Type

This item is to select the panel resolution and signal type connected to internal LVDS port.

The setting value can be ignored when internal LVDS is “Disabled”.

**Add-On LVDS Support**

This item is to select whether the Add-On LVDS port is used.  
The setting for this machine should be “Enabled”.

**Add-On LVDS Panel Type**

This item is to select the panel resolution and signal type.  
The setting should be “1024x768 24Bit”.