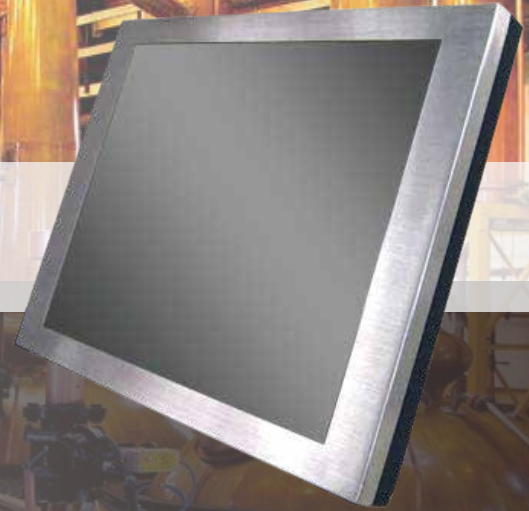


PT-150D525

15" Intel ATOM FANLESS Panel PC

- True Fanless ATOM-D525 Panel PC
- IP65 in Front & Side Frame
- Easy Install HDD Tray
- Anti-vibration HDD kit
- Compact & Slim Design



Specifications

System	
Motherboard Type	Intel
Form Factor	Mini-ITX
CPU	Intel ATOM Dual Core D525(45nm/1.8GHz/1ML2 cache)
System Chipset	Intel NM10
FSB	800MHz
DIMM Socket	DDR3 RAM (Up to 4GB) default 1GB
Graphic	Intel Pineview-D intergrated graphic engine
Audio	Realtek ALC662 6-Channel HD Audio CODEC
LAN Controller	Realtek RTL8111E 10/100/1000 Mb/s
I/O Connector	RJ-45 LAN × 1 / Serial port × 4 / USB Port × 4 / VGA Port × 1 / Parallel Port × 1 PS/2 Mini DIN keyboard port & mouse port / Audio Line-in/out and Mic-in Jacks
Display	
Size	15"; 1024 x 768
Contrast Ratio	450 : 1
Brightness	250cd/m ²
Mechanical	
Touch	Default Taiwan 5wire resistive touch
Device	default 250GB 2.5" SATA HDD
Power Supply	ADAPTER 12V/7A 84W (S-JACK-4) (RoHS)
Bezel	Stainless
Dimension	379.84 x 79 x 280 mm (W x D x H)
Operating Temp	0°~40°C (Fanless)
Relative Humidity	10%~90%@50°C , non-condensing
Vibration	5~17,0.1"double amplitude displacement,17~640Hz,1.5G acceleration perk to perk
Shock	10-25Hz(X,Y,Z direction 2G,30 minutes)
Features	IP65 in front & side frame

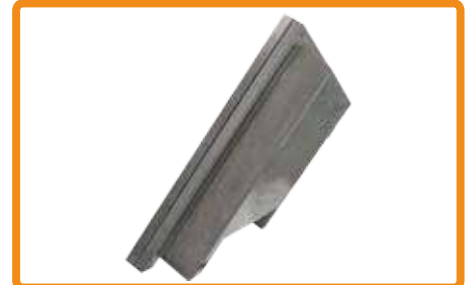
Features



■ IP65 in Front & Side Frame



■ HDD Anti-Vibration Easy-install kit



■ Ultra Slim Design