

BTIO BTS1009

Bluetooth to RS-232 Adapter



Features



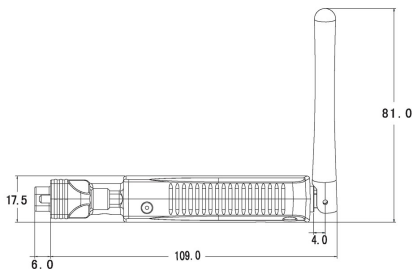
- Link any RS-232 device to a Bluetooth communication
- Supports Bluetooth Class 1 (20 dbm) version 1.1 standard
- Operating distance of up to 100 meters in free space
- Supports baud rate up to 460.8 Kbps
- Compact sized and easy operation design with User-friendly Windows configuration software
- Intelligent draw/provide 5VDC power to/from the device through the 9th-pin
- Powered by external power adapter or USB port on hosting device
- Support for Microsoft Windows 98SE, Me, 2000, XP and 2003

Overview

SUNIX Bluetooth to IO (BTIO) series is designed to offer the perfect wireless solution for industrial and commercial applications. The BTS1009 is compliance with Bluetooth Class 1 standard version 1.1, which allows data communication distance up to 100M and transfer rate up to 460.8 Kbps. SUNIX BTS1009 presents users with low cost solution that enable them to simply convert their serial peripherals into Bluetooth

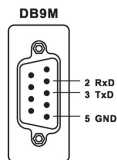
compatible and communicate wirelessly. Some of the great features of SUNIX BTS1009 are its high sensitivity, low power consumption, point-to-point data transmission, and economic wireless solution; which made it suitable for numerous electronic devices, such as barcode scanner, POS device, PDA, serial printer, and many other serial devices on the market.

Dimensions



Pin Assignment

RS-232



Specifications

Serial Communication

Type	Bluetooth to RS-232 Adapter
Interface	RS-232
No. of Port	1 port
Port Type	DB9 Male
Signal	TxD, RxD, GND
Throughput	Maximum up to 460.8Kbps
Baud rate	1200bps ~ 460.8 Kbps
Data bit	5,6,7,8
Stop bit	1,1.5,2
Parity	even, odd, none,
Protection	2KV ESD protection for all signal

Bluetooth Communication

Standard	Bluetooth V1.1
RF Power	Class 1
Frequency	2.4~2.4835GHz unlicensed ISM band
Modulation	GFSK, 1Mbps, 0.5BT Gaussian
Spread Spectrum	FHSS (Frequency Hopping Spread Spectrum)
Services	Series Port Profile (SPP)
Sensitivity	<-88dBm at < 0.1% BER
Distance	Up to 100m in free space
Antenna	2dBi Chip Embed and External Antenna

Software

Driver	Microsoft Windows 98SE/ME/2000/XP/2003
Configuration	Remote Configuration Utility or Serial Console

Power

Power Input	5V DC
Power Consumption	Tx Typical: 115mA Rx Typical: 75mA Standby Mode: 15mA

LED Indicate

Power, Bluetooth active, Mode active

Mechanical

Dimensions	109 (L) x 34(W) x 18(H) mm
Case	Hard Plastic (PC)
Weight	150 ± 2 g

Regulatory Approvals

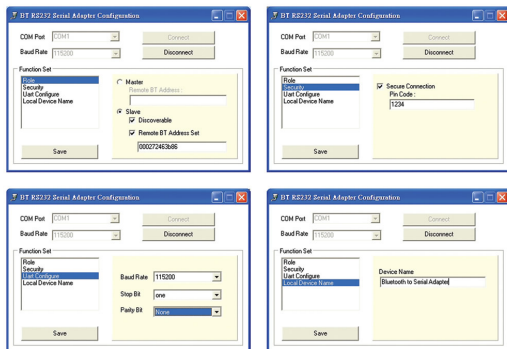
CE, FCC

Operation Environment

Operation Temperature	0 to 60 °C
Operation Humidity	5 to 95% RH
Storage Temperature	-20°C to 85°C

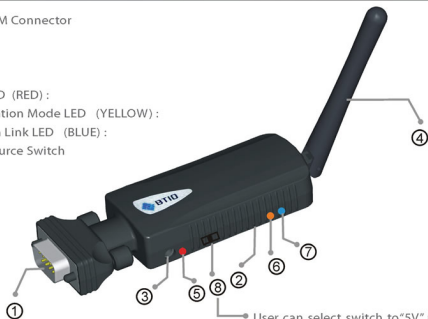
User Friendly Configuration Software

SUNIX BT10 series offer an user-friendly software for users configure COM port parameters, Security Settings, and Device Name.



Appearance

- 1.) RS232 DB9M Connector
- 2.) Set Button
- 3.) DC Jack:
- 4.) Antenna
- 5.) ● Power LED (RED) :
- 6.) ● Configuration Mode LED (YELLOW) :
- 7.) ● Bluetooth Link LED (BLUE) :
- 8.) Power resource Switch



User can select switch to "5V" position, the adapter can either draw/provide DC 5V power to/from the device through the 9th-pin of the connector depends on the following scenario.



Application

1. If the device equips 5V self-power features (e.g. barcode scanner with 5V power adapter input), Bluetooth to RS-232 Adapter can work successfully without any power. A DC 5V power will be applied to Bluetooth to RS-232 Adapter through DB9M 9th-pin connector from the device.



2. If Bluetooth to RS-232 Adapter with 5V power adapter input, a DC 5V power will output to the device (e.g. barcode scanner) through DB9M 9th-pin connector from Bluetooth to RS-232 Adapter.



CAUTION: Take caution not to let any of the following situations happen while the switch is set to "5V" position, or damages may occur to both your device and the Bluetooth Adapter:

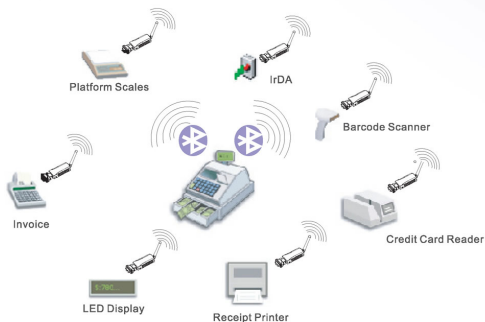
1. Do NOT plug in DC 12V power required devices.
2. Do NOT use DC 5V power adapters on both sides at the same time.
3. Your device MUST support power in/output toward DB9M 9th-pin connector.

Application

Host Control Mode:

User can control maximum 7 BTS1009 adapters via one USB Bluetooth Dongle or embedded Bluetooth module on PC host. After establishing an exclusive connection by utilizing Bluetooth MAC Address and

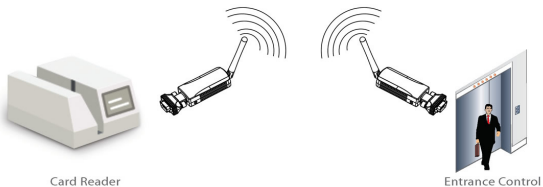
PIN code, BTS1009 adapter will automatically try to link (Master) or to be linked (Slave) with another paired Bluetooth device wirelessly, just like there is a cable connected between them.



Pair Connection Mode:

User can pair two BTS1009 adapters with different RS-232 devices without any PC host controlling. After pairing process is done and power is on, two

BTS1009 adapters will automatically establish an exclusive connection with each other, just like there is a RS-232 cable connected between them.



Order Information

BTS1009 Bluetooth to RS-232 Adapter

Packing List

1. Bluetooth to RS-232 Adapter
2. User's Manual and Software CD ROM
3. Quick Installation Guide
4. Power Adapter 5V / 1A,

Optional Accessories

1. USB to Bluetooth Dongle